



---

# AMERICAN HEIRLOOM LIGHTING™ COLLECTION

---

Historically Original  
Styles With Distinct  
Heirloom Quality

A DIVISION OF

# B&P

LAMP SUPPLY, INC.

SERVING THE TRADE SINCE 1952

## Early American – 19th Century Hall Lanterns

**H**all lanterns of this design were originally made in the early 19th century for use in British Colonial and American Colonial homes. Used to illuminate as well as to decorate entrance halls, foyers, and hallways, the hall lantern offered good lighting and a warm welcome to visitors of the early colonial homes.

Our replica Hall Lanterns are all handmade like the early 19th century originals. The glass domes and smoke bells are hand blown and have copper wheel engraved motifs. The solid brass hardware is also handmade, including the canopy, chain, bezel band with griffin head hooks, and ventilator cap. We now offer your choice of 3 hardware finishes; dark antique brass, pewter, or polished and lacquered brass.

Our Hall Lanterns are offered in five sizes and each is equipped with 20" of adjustable drop chain.

- Large Hall Lantern with glass dome diameter of 12" x 13<sup>3</sup>/<sub>4</sub>" deep and adjustable ceiling drop from 37" to 52". This size is recommended for 10' to 12' ceilings.
- Medium Hall Lantern with glass dome diameter of 10<sup>1</sup>/<sub>2</sub>" x 11<sup>1</sup>/<sub>2</sub>" deep and adjustable ceiling drop from 31" to 47". This size is recommended for 9' to 10' ceilings.
- Small Hall Lantern with glass dome diameter of 9<sup>1</sup>/<sub>2</sub>" x 9<sup>1</sup>/<sub>4</sub>" deep and adjustable ceiling drop from 24" to 44<sup>1</sup>/<sub>2</sub>". This size is recommended for 8' and 9' ceilings.
- Tiny Hall Lantern with glass dome diameter of 7" x 9<sup>1</sup>/<sub>4</sub>" deep and adjustable ceiling drop from 20<sup>1</sup>/<sub>2</sub>" to 39". This size is recommended for 8' and 9' ceilings.
- "New England" Design Hall Lantern w/glass dome diameter of 9<sup>1</sup>/<sub>2</sub>" x 9" deep and adjustable ceiling drop from 19" to 40". This size is for 8' and 9' ceilings.



*All Hall Lanterns come complete w/heavy, cast brass canopy & chain*

*We ship these lanterns electrified. There is a small amount of assembly required on the customer's part since the glass components are packed separate from the brass components to avoid damage.*

**"Tiny Hall Lantern"** 7" x 9<sup>1</sup>/<sub>4</sub>" deep dome, adjustable drop from 20<sup>1</sup>/<sub>2</sub>" to 39".  
This size recommended for 8' and 9' ceilings.



*Tiny hall lantern with clear glass dome.*  
Your choice of hardware finishes.

- No. 69564C** – Antique brass finish (pictured)
- No. 69564B** – Brass, polished & lacquered
- No. 69564P** – Pewter finish



*Tiny hall lantern with "Floral Foliate" copper wheel cut design.* Your choice of hardware finishes.

- No. 69565B** – Brass, polished & lacquered (pictured)
- No. 69565C** – Antique brass finish
- No. 69565P** – Pewter finish



*Tiny hall lantern with "Laurel Swags" copper wheel cut design.* Your choice of hardware finishes.

- No. 69566P** – Pewter finish (pictured)
- No. 69566B** – Brass, polished & lacquered
- No. 69566C** – Antique brass finish

## Early American – 19th Century Hall Lanterns

Available in your choice of Antique Brass,  
Polished and Lacquered, or Pewter hardware finishes.



Pewter finish



Brass, polished & lacquered finish



Antique brass  
finish

### "New England"

"New England" Design Hall Lantern with glass dome diameter of 9 1/2" X 9" deep and adjustable ceiling drop from 19" to 40". This size is for 8' and 9' ceilings.

**No. 69555C** - Antique brass finish

**No. 69555B** - Brass, polished and lacquered

**No. 69555P** - Pewter finish

*Late  
Addition!*

**No. 69558C** - Large "New England" Design Hall Lantern with antique brass finish and glass diameter of 12" X 11" deep. With an adjustable ceiling drop from 30 1/2" to 45"; this size is recommended for 9' to 10' ceilings. Same as antique brass finish lantern pictured on this page except larger (above, right).



Antique brass finish



Brass, polished and lacquered finish



Pewter finish

### "New England - Wheat"

"New England" Hall Lantern with copper wheel cut "Wheat" design glass dome with 9 1/2" diameter X 9" deep, and adjustable ceiling drop from 19" to 40". This size is for 8' and 9' ceilings.

**No. 69557C** - Antique brass finish

**No. 69557B** - Brass, polished and lacquered

**No. 69557P** - Pewter finish



## Early American – 19th Century Hall Lanterns

Available in your choice of Antique Brass, Brass Polished and Lacquered, or Pewter hardware finishes.

- Large Hall Lantern with glass dome diameter of 12" x 13<sup>3</sup>/<sub>4</sub>" deep and adjustable ceiling drop from 37" to 52". This size is recommended for 10' to 12' ceilings.
- Medium Hall Lantern with glass dome diameter of 10<sup>1</sup>/<sub>2</sub>" x 11<sup>1</sup>/<sub>2</sub>" deep and adjustable ceiling drop from 31" to 47". This size is recommended for 9' to 10' ceilings.
- Small Hall Lantern with glass dome diameter of 9<sup>1</sup>/<sub>2</sub>" x 9<sup>1</sup>/<sub>4</sub>" deep and adjustable ceiling drop from 24" to 44<sup>1</sup>/<sub>2</sub>". This size is recommended for 8' and 9' ceilings.



“Clear Hall Lantern” w/antique brass finish  
**No. 69551C** – Small Hall Lantern, Clear  
**No. 69550C** – Medium Hall Lantern, Clear  
**No. 69549C** – Large Hall Lantern, Clear



“Clear Hall Lantern” w/brass, polished & lacquered finish  
**No. 69551B** – Small Hall Lantern, Clear  
**No. 69550B** – Medium Hall Lantern, Clear  
**No. 69549B** – Large Hall Lantern, Clear



“Clear Hall Lantern” w/pewter finish  
**No. 69551P** – Small Hall Lantern, Clear  
**No. 69550P** – Medium Hall Lantern, Clear  
**No. 69549P** – Large Hall Lantern, Clear



“Clear Hall Lantern” w/pressed glass “bob” & pewter finish  
**No. 69522P** – Small Hall Lantern, Clear  
**No. 69521P** – Medium Hall Lantern, Clear  
**No. 69520P** – Large Hall Lantern, Clear



“Clear Hall Lantern” w/pressed glass “bob” & brass, polished & lacquered finish  
**No. 69522B** – Small Hall Lantern, Clear  
**No. 69521B** – Medium Hall Lantern, Clear  
**No. 69520B** – Large Hall Lantern, Clear



“Clear Hall Lantern” w/pressed glass “bob” & antique brass finish  
**No. 69522C** – Small Hall Lantern, Clear  
**No. 69521C** – Medium Hall Lantern, Clear  
**No. 69520C** – Large Hall Lantern, Clear

## Early American – 19th Century Hall Lanterns

Available in your choice of Antique Brass, Brass Polished and Lacquered, or Pewter hardware finishes.

- Large Hall Lantern with glass dome diameter of 12" x 13<sup>3</sup>/<sub>4</sub>" deep and adjustable ceiling drop from 37" to 52". This size is recommended for 10' to 12' ceilings.
- Medium Hall Lantern with glass dome diameter of 10<sup>1</sup>/<sub>2</sub>" x 11<sup>1</sup>/<sub>2</sub>" deep and adjustable ceiling drop from 31" to 47". This size is recommended for 9' to 10' ceilings.
- Small Hall Lantern with glass dome diameter of 9<sup>1</sup>/<sub>2</sub>" X 9<sup>1</sup>/<sub>4</sub>" deep and adjustable ceiling drop from 24" to 44<sup>1</sup>/<sub>2</sub>". This size is recommended for 8' and 9' ceilings.



“Floral Foliate” copper wheel cut hall lantern w/antique brass finish

**No. 69545C** – Small Hall Lantern

**No. 69544C** – Medium Hall Lantern

**No. 69543C** – Large Hall Lantern



“Floral Foliate” copper wheel cut hall lantern w/brass, polished & lacquered finish

**No. 69545B** – Small Hall Lantern

**No. 69544B** – Medium Hall Lantern

**No. 69543B** – Large Hall Lantern



“Floral Foliate” copper wheel cut hall lantern w/pewter finish

**No. 69545P** – Small Hall Lantern

**No. 69544P** – Medium Hall Lantern

**No. 69543P** – Large Hall Lantern



Replacement glass smoke bells for antique hall lanterns. These smoke bells or “plates” are of hand blown clear glass that is thin and fairly consistent in form. All of these slip 1/8 IP pipe (3/8" center hole). Hardware not included. *Item ships as glass only.*

**No. 17990** – 9<sup>1</sup>/<sub>4</sub>" dia., 2<sup>1</sup>/<sub>4</sub>" deep

**No. 17991** – 10<sup>5</sup>/<sub>8</sub>" dia., 2<sup>5</sup>/<sub>8</sub>" deep

**No. 17992** – 11<sup>1</sup>/<sub>4</sub>" dia., 2<sup>3</sup>/<sub>8</sub>" deep

### “American Empire”

**No. 69580C**- American Empire Hall Lantern w/antique brass finish hardware. The beautifully shaped clear “hour glass” dome is 10" X 14" deep and the lantern has an adjustable ceiling drop from 26" to 46". This size is recommended for 9' to 10' ceilings.



## Early American – 19th Century Hall Lanterns

Available in your choice of Antique Brass, Brass Polished and Lacquered, or Pewter hardware finishes.

- Large Hall Lantern with glass dome diameter of 12" x 13<sup>3</sup>/<sub>4</sub>" deep and adjustable ceiling drop from 37" to 52". This size is recommended for 10' to 12' ceilings.
- Medium Hall Lantern with glass dome diameter of 10<sup>1</sup>/<sub>2</sub>" x 11<sup>1</sup>/<sub>2</sub>" deep and adjustable ceiling drop from 31" to 47". This size is recommended for 9' to 10' ceilings.
- Small Hall Lantern with glass dome diameter of 9<sup>1</sup>/<sub>2</sub>" x 9<sup>1</sup>/<sub>4</sub>" deep and adjustable ceiling drop from 24" to 44<sup>1</sup>/<sub>2</sub>". This size is recommended for 8' and 9' ceilings.



"Laurel Swags" copper wheel cut hall lantern w/antique brass finish

**No. 69548C** – Small Hall Lantern

**No. 69547C** – Medium Hall Lantern

**No. 69546C** – Large Hall Lantern



"Laurel Swags" copper wheel cut hall lantern w/brass, polished & lacquered finish

**No. 69548B** – Small Hall Lantern

**No. 69547B** – Medium Hall Lantern

**No. 69546B** – Large Hall Lantern



"Laurel Swags" copper wheel cut hall lantern w/pewter finish

**No. 69548P** – Small Hall Lantern

**No. 69547P** – Medium Hall Lantern

**No. 69546P** – Large Hall Lantern

Available 6/1/2004



### Cranberry Lantern

Tiny Hall Lantern with Cranberry color (stained glass) dome and smoke plate, "Floral Foliate" copper wheel cut design. 7" dia. X 9<sup>1</sup>/<sub>4</sub>" deep dome with adjustable drop from 20<sup>1</sup>/<sub>2</sub>" to 39". Good size for 8' and 9' ceilings. Your choice of hardware finishes.

**No. 69567B** - Brass, polished and lacquered

**No. 69567C** - Antique brass finish

**No. 69567P** - Pewter finish



## Early American – 19th Century Hall Lanterns

Available in your choice of Antique Brass, Brass Polished and Lacquered, or Pewter hardware finishes.

- Large Hall Lantern with glass dome diameter of 12" x 13<sup>3</sup>/<sub>4</sub>" deep and adjustable ceiling drop from 37" to 52". This size is recommended for 10' to 12' ceilings.
- Medium Hall Lantern with glass dome diameter of 10<sup>1</sup>/<sub>2</sub>" x 11<sup>1</sup>/<sub>2</sub>" deep and adjustable ceiling drop from 31" to 47". This size is recommended for 9' to 10' ceilings.
- Small Hall Lantern with glass dome diameter of 9<sup>1</sup>/<sub>2</sub>" X 9<sup>1</sup>/<sub>4</sub>" deep and adjustable ceiling drop from 24" to 44<sup>1</sup>/<sub>2</sub>". This size is recommended for 8' and 9' ceilings.



“Country French Lattice” copper wheel cut hall lantern w/antique brass finish

**No. 69535C** – Small Hall Lantern

**No. 69534C** – Medium Hall Lantern

**No. 69533C** – Large Hall Lantern



“Country French Lattice” copper wheel cut hall lantern w/brass, polished & lacquered finish

**No. 69535B** – Small Hall Lantern

**No. 69534B** – Medium Hall Lantern

**No. 69533B** – Large Hall Lantern



“Country French Lattice” copper wheel cut hall lantern w/pewter finish

**No. 69535P** – Small Hall Lantern

**No. 69534P** – Medium Hall Lantern

**No. 69533P** – Large Hall Lantern

### “Early American”

**No. 69556C** – Early American Hall Lantern with copper wheel cut “Grapes and Leaves” on a clear background, 10" x 14" deep dome, adjustable drop from 27" to 45<sup>1</sup>/<sub>2</sub>". This size is recommended for 9' and 10' ceilings.



## Early American – 19th Century Hall Lanterns

Available in your choice of Antique Brass, Brass Polished and Lacquered, or Pewter hardware finishes.

- Large Hall Lantern with glass dome diameter of 12" x 13 3/4" deep and adjustable ceiling drop from 37" to 52". This size is recommended for 10' to 12' ceilings.
- Medium Hall Lantern with glass dome diameter of 10 1/2" x 11 1/2" deep and adjustable ceiling drop from 31" to 47". This size is recommended for 9' to 10' ceilings.
- Small Hall Lantern with glass dome diameter of 9 1/2" X 9 1/4" deep and adjustable ceiling drop from 24" to 44 1/2". This size is recommended for 8' and 9' ceilings.



“Greek Key” copper wheel cut, polished & frosted design hall lantern w/antique brass finish

**No. 69563C** – Small Hall Lantern  
**No. 69562C** – Medium Hall Lantern  
**No. 69561C** – Large Hall Lantern



“Greek Key” copper wheel cut, polished & frosted design hall lantern w/brass, polished & lacquered finish

**No. 69563B** – Small Hall Lantern  
**No. 69562B** – Medium Hall Lantern  
**No. 69561B** – Large Hall Lantern



“Greek Key” copper wheel cut, polished & frosted design hall lantern w/pewter finish

**No. 69563P** – Small Hall Lantern  
**No. 69562P** – Medium Hall Lantern  
**No. 69561P** – Large Hall Lantern



### “American Eagle”

A copper wheel cut Hall Lantern. The hand cut dome is marvelously decorated with eagles, American shields, and the motto: *E Pluribus Unum* (“Out of Many One”) inscribed in a flowing banner on a clear background. The glass smoke plate has 13 cut stars signifying America’s original 13 colonies. The glass dome diameter is 9 1/2" X 9 1/4" deep and the lantern has an adjustable ceiling drop from 24" to 44 1/2". This size is recommended for 8' to 9' ceilings.

**No. 69570C**- Antique brass finish  
**No. 69570B**- Brass, polished and lacquered finish  
**No. 69570P**- Pewter finish



## Early 20th Century Styled Electric Lamps

Inspired by nature as well as by the "Arts & Crafts" movement, many American lamp manufacturers in the early 20th century created beautiful electric table lamp designs featuring reverse painted and leaded glass shades. We have re-created some of our favorites from the period, which were originally designed by the masters - Tiffany Studios and the Handel Lamp Company.

All reverse painted shades are decorated by hand. All lamp bases are made of cast metal and finished in a dark brown-bronze color. The 16" shaded lamps are designed with 3 light clusters, pull chain sockets, and risers under the shades and 8' cord with cord switch. The 12" shaded lamps are designed with harp and single keyless sockets with 8' cord and cord switch. We have also added Tiffany and Handel style acorn pulls and finials to the lamps for authentic detailing. All lamps with the exception of #69732C & 69732 are UL approved.

Lamps less stained glass shades have a 1/8 IP rod and finial for fitting the shade size noted, but do not have an aperture ring and heat cap. Lamps less reverse painted shades come with heat cap, aperture ring and finial for fitting the size of the shade noted. For alternative shade selections for these lamps, please see pages R16, R17, and R18.

Available May 15, 2004



**No. 69722B** -Arts & Crafts design stained glass Table Lamp. 23 1/2" ht., **complete with 16" diameter stained glass shade** and Tiffany design base. Electrified and UL listed - Pictured.

**No. 69722** - Table Lamp base same as above but **less shade**.

**No. 69723B** - Same as #69722B except 18 1/2" tall, **complete with 12" diameter shade**.

**No. 69723** - Table lamp base same as #69723B but **less shade**.



**No. 69724C** - "Roses" reverse painted Table Lamp. 22 1/2" ht., **complete with 16" diameter glass shade**. The base is a classic Tiffany design with bulbous plant like features. Electrified and UL listed - Pictured.

**No. 69724** - Table lamp base same as above but **less shade**.

**No. 69725C** - Same as #69724C except 19" tall, **complete with 12" diameter shade**.

**No. 69725** - Table lamp base same as #69725C but **less shade**.

## Early 20th Century Styled Electric Lamps

**Lamps less stained glass shades** have a 1/8 IP rod and finial for fitting the shade size noted, but do not have an aperture ring and heat cap. **Lamps less reverse painted shades** come with heat cap, aperture ring and finial for fitting the size of the shade noted. For alternative shade selections for these lamps, please see pages R16, R17, and R18.



Available May 15, 2004

(left) **No. 69720C** - "Parrots" reverse painted Table Lamp. 22 1/2" ht., **with 16" diameter glass shade**. The base is a Tiffany design with an Arts & Crafts and American Indian influence. **Complete** with shade, electrified and UL listed.

**No. 69720** - Table Lamp same as above but **less shade**.

(right)

**No. 69732C** - "Hydrangeas" reverse painted Table Lamp. 25 1/2" ht., **complete with 16" diameter glass shade**. The base is a Bradley & Hubbard Mfg. Co. design. Electrified, not UL listed.

**No. 69732** - Table lamp base same as above but **less shade**.



Available May 15, 2004



(left) **No. 69726B** - Tiffany "Acorns" design stained glass Table Lamp. 19 1/2" ht., **complete with 12" diameter stained glass shade** and Tiffany design base. Electrified and UL listed - Pictured.

**No. 69726** - Table lamp base same as above but **less shade**.

**No. 69727B** - Same as #69726B except 23 1/2" tall, **complete with 16" diameter shade**.

**No. 69727** - Table lamp base same as 69727B but **less shade**.

(right)

**No. 69733C** - "Poppy" reverse painted Table Lamp. 23" ht., **complete w/16" dia. glass shade**. Electrified & UL listed.

**No. 69733** - Table lamp base same as above but **less shade**.



## Early 20th Century Styled Electric Lamps

**Lamps less stained glass shades** have a 1/8 IP rod and finial for fitting the shade size noted, but do not have an aperture ring and heat cap. **Lamps less reverse painted shades** come with heat cap, aperture ring and finial for fitting the size of the shade noted. For alternative shade selections for these lamps, please see pages R16, R17, and R18.

Available May 15, 2004



(left) **No. 69728C** - "Scenic" reverse painted Table Lamp. 23" ht., **complete with 16" diameter glass shade**. Base is re-created from an original Tiffany design showing simple Mission styling. Electrified and UL listed - Pictured.

**No. 69728** - Table lamp base same as above but **less shade**.

**No. 69729C** - Same as #69728C except 19<sup>3/4</sup>" tall, **complete with 12" diameter shade**.

**No. 69729** - Table lamp base same as #69729C but **less shade**.



**No. 69734C** - "Hydrangeas" reverse painted Table Lamp. 18<sup>1/2</sup>" ht., **complete with 12" diameter glass shade**. Electrified and UL listed.

**No. 69734** - Table lamp base same as above but **less shade**.



**No. 69724A** - "Rose Blossoms" reverse painted Table Lamp. 22<sup>1/2</sup>" ht., **complete with 16" diameter glass shade**. The base is a classic Tiffany design with bulbous plant like features. Electrified and UL listed - Pictured.

**No. 69724** - Table lamp base same as above but **less shade**.

**No. 69725A** - Same as #69724A except 19" tall, **complete with 12" diameter shade**.

**No. 69725** - Table lamp base same as 69725A but **less shade**.



## Early 20th Century Styled Electric Lamps

**Lamps less stained glass shades** have a 1/8 IP rod and finial for fitting the shade size noted, but do not have an aperture ring and heat cap. **Lamps less reverse painted shades** come with heat cap, aperture ring and finial for fitting the size of the shade noted. For alternative shade selections for these lamps, please see pages R16, R17, and R18.

Available May 15, 2004



**No. 69721C** - "Parrots" reverse painted Table Lamp. 18<sup>3/4</sup>" ht., **complete with 12" diameter glass shade**. The base is a Tiffany design with an Arts & Crafts and American Indian influence. Electrified and UL listed.

**No. 69721** - Table lamp base same as above but **less shade**.



**No. 69735C** - "Poppy" reverse painted Table Lamp. 18" ht., **complete with 12" diameter glass shade**. The plant like Handel designed base has embossed leaves on the column. Electrified and UL listed.

**No. 69735** - Table lamp base same as above but **less shade**.



**No. 69731B** - Arts & Crafts design stained glass Table Lamp. 19<sup>3/4</sup>" ht., **complete with 12" diameter stained glass shade** and Tiffany designed base with Mission styling. Electrified and UL listed - Pictured.

**No. 69731** - Table lamp base same as above but **less shade**.

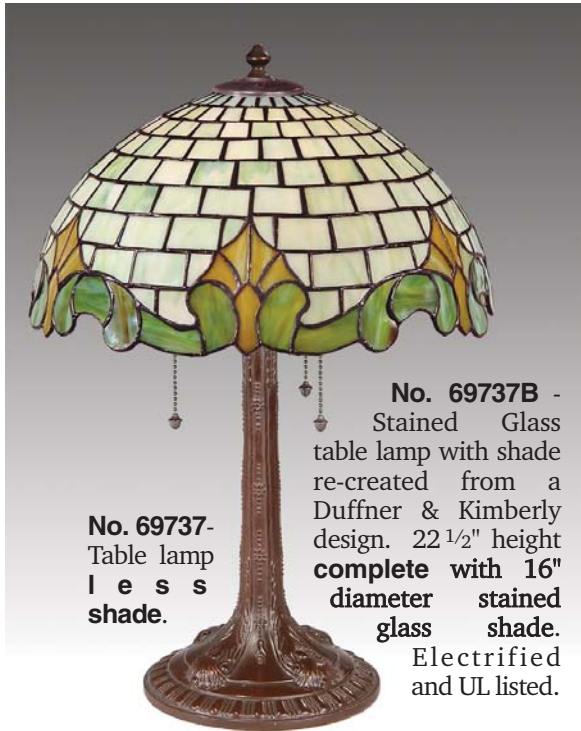
**No. 69730B** - Same as #69731B except 24" tall, **complete with 16" diameter shade**.

**No. 69730** - Table lamp base same as #69730B but **less shade**.

## Early 20th Century Styled Electric Lamps

**Lamps less stained glass shades** have a 1/8 IP rod and finial for fitting the shade size noted, but do not have an aperture ring and heat cap. **Lamps less reverse painted shades** come with heat cap, aperture ring and finial for fitting the size of the shade noted. For alternative shade selections for these lamps, please see pages R16, R17, and R18.

Available May 15, 2004



**No. 69737-**  
Table lamp  
**l e s s**  
shade.

**No. 69737B** -  
Stained Glass  
table lamp with shade  
re-created from a  
Duffner & Kimberly  
design. 22 1/2" height  
**complete with 16"**  
**diameter stained**  
**glass shade.**  
Electrified  
and UL listed.



**No. 69736E** - Small table lamp  
complete with **8" diameter**  
**"Parrots" reverse painted**  
**shade.** 14" height, complete,  
electrified and UL listed.



**No. 69736F** - Small table lamp  
with **8" diameter "Roses" reverse**  
**painting shade.** 14" height,  
complete electrified and UL  
listed.



**No. 69736A** - Small stained glass table  
lamp with shade re-created from  
Duffner & Kimberly design. 14" height  
**complete with 8" diameter stained**  
**glass shade.** Electrified and UL listed.



**No. 69736B** - Small stained glass  
table lamp with Arts & Crafts design  
shade. 14" height **complete with 8"**  
**diameter stained glass shade.**  
Electrified and UL listed.



**No. 69736D** - Small stained glass  
table lamp with Tiffany "Acorns"  
design shade. 14" height **complete**  
**with 8" diameter stained glass shade.**  
Electrified and UL listed.

**No. 69736** - Table lamp same as  
above except **less shade.**

## Tiffany Stained Glass Style Shades. Designed for Quality Electric Lamps - Circa 1900-1940

### Regarding the stained glass shades:

Each shade has a bronze finish vented heat cap, which is soldered securely to the top of the shade. The vented heat cap has a center hole, which will slip 1/8 IP nipples or 1/4-27F rod for attachment to your table lamp or hanging fixture.

Available May 15, 2004



**No. 07908** - 16" dia. "Arts & Crafts" style stained glass shade designed with a light caramel color honeycomb pattern on the top and a pale pink and green stylized border. The vented heat cap has a slip 1/8 IP center hole. 8" height.

**No. 07909** - Same style as above - 12" dia. X 6 1/2" ht.



**No. 07913** - 16" dia. Tiffany style "Acorns" design stained glass shade having geometric panels highlighted by a center panel of stylized Acorns. The vented heat cap has a slip 1/8 IP center hole. 6 1/2" ht.

**No. 07912** - Same style as above - 12" dia. X 8" ht.

**No. 07918** - Same style as above - 8" dia. X 4 3/4" ht.



**No. 07911** - 16" dia. stained glass shade with an "Arts & Crafts" style floral design. The off-white colored background panels, which are highlighted by a center floral arrangement, show fiery opalescent colors when lit. 6" height.

**No. 07910** - Same style as above - 12" diameter X 8" height

**No. 07917** - Same style as above - 8" diameter X 4 3/4" height.



**No. 07915** - 16" dia. stained glass shade re-creating an early Duffner & Kimberly design, having an irregular border of green scrolls and amber shells and a pale green and white brick work dome. The vented heat cap has a slip 1/8 IP center hole. 6 1/2" ht.

**No. 07914** - Same style as above - 12" dia. X 8" ht.

**No. 07916** - Same style as above - 8" dia. X 4 3/4" ht.



# Reverse Painted Handel Style Shades.

## Designed for Quality Electric Lamps - Circa 1900-1940

**Regarding the reverse painted shades:**

All shades are hand painted on the inside.

16" dia. shades all have top opening dimensions of about 3<sup>5</sup>/<sub>8</sub>" O.D. and 3<sup>5</sup>/<sub>16</sub>" I.D.

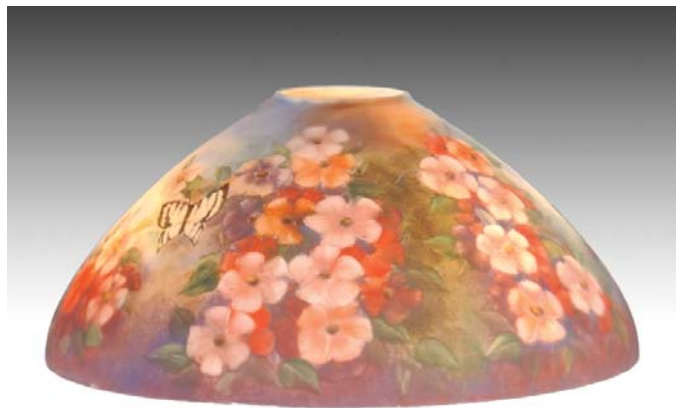
14" diameter shades all have top opening dimensions of 3" O.D. and 2<sup>11</sup>/<sub>16</sub>" I.D.

12" diameter shades all have top openings of about 3" O.D. and 2<sup>11</sup>/<sub>16</sub>" I.D.

8" diameter shades all have top openings of about 2<sup>1</sup>/<sub>2</sub>" O.D. and 2<sup>1</sup>/<sub>4</sub>" I.D.

Available  
May 15,  
2004

**Regarding hardware designed to hold the reverse painted shades:** Please refer to page R-18 for heat caps, aperture rings and appropriate finials for fitting to the reverse painted shades.



Reverse painted glass domical shade with hand painted "Rose Blossom". The design is based on an original Handel decoration.

**No. 08366** - 16" diameter X 7" height - pictured.

**No. 08377** - 14" diameter X 6 1/2" ht.

**No. 08367** - 12" diameter X 6 1/2" ht.



Reverse painted glass domical shade with hand painted "Roses". The design is based on an original Handel decoration.

**No. 08368** - 16" diameter X 7" height - pictured.

**No. 08376** - 14" diameter X 6 1/2" ht.

**No. 08369** - 12" dia. X 6 1/2" ht.

**No. 08375** - 8" diameter X 5 1/2" ht.



Reverse painted "Scenic" domical shade with hand painted cottages on a lake and a panoramic mountainous landscape.

**No. 08370** - 16" diameter X 7" height - pictured.

**No. 08378** - 14" diameter X 6 1/2" ht.

**No. 08371** - 12" dia. X 6 1/2" ht.



Reverse painted glass domical shade with hand painted "Parrots". The design is based on an original Handel decoration.

**No. 08360** - 16" diameter X 7" height - pictured

**No. 08374** - 14" diameter X 6 1/2" ht.

**No. 08361** - 12" diameter X 6 1/2" ht.

**No. 08373** - 8" diameter X 5 1/2" ht.

**Shade Shapes**  
(according to  
diameter)



# Early Electric Style Lampshades

## Regarding the reverse painted shades:

All shades are hand painted on the inside.

16" dia. shades all have top opening dimensions of about 3<sup>5</sup>/<sub>8</sub>" O.D. and 3<sup>5</sup>/<sub>16</sub>" I.D.

14" diameter shades all have top opening dimensions of 3" O.D. and 2<sup>11</sup>/<sub>16</sub>" I.D.

12" diameter shades all have top openings of about 3" O.D. and 2<sup>11</sup>/<sub>16</sub>" I.D.

8" diameter shades all have top openings of about 2<sup>1</sup>/<sub>2</sub>" O.D. and 2<sup>1</sup>/<sub>4</sub>" I.D.

Shades Available  
May 15, 2004

## Regarding hardware designed to hold the reverse painted shades:

See below for heat caps, aperture rings and appropriate finials for fitting to the reverse painted shades.



Reverse painted glass domical shade with hand painted "Poppy". The design is based on an original Handel decoration.

**No. 08362** - 16" diameter X 7" height - pictured

**No. 08363** - 12" diameter X 6<sup>1</sup>/<sub>2</sub>" ht.



Reverse painted glass dome shade with hand painted "Hydrangeas". The design is based on an original Handel decoration.

**No. 08364** - 16" diameter X 7<sup>1</sup>/<sub>4</sub>" height - pictured

**No. 08365** - 12" diameter X 6<sup>1</sup>/<sub>2</sub>" ht.

## Shade Shapes (according to diameter)



**No. 22620** - 4" heat cap and aperture ring (2 piece set) designed to fit a 16" diameter shade with a center hole of about 3<sup>5</sup>/<sub>8</sub>" O.D.

**No. 22621** - 3<sup>1</sup>/<sub>4</sub>" heat cap and aperture ring (2 piece set) designed to fit a 12" and 14" diameter shade with a center hole of about 3" O.D.

**No. 22622** - 2<sup>5</sup>/<sub>8</sub>" heat cap and aperture ring (2 piece set) designed to fit a 8" diameter shade with a center hole of about 2<sup>1</sup>/<sub>2</sub>" O.D.



**No. 11281B** - Tiffany and Handel styled finial with 1/8F threads.

**No. 11281C** - Tiffany and Handel styled finial with 1/4-27F threads.

# Early American – Brass Candlesticks – 1800-1900

Candleholders were one of the earliest lighting devices used in America. Even though the primary sources of lighting in America changed drastically, candles remained in use and in favor throughout the 19th and 20th centuries. Many rural areas of the South continued to use kerosene lamps and candles well into the 1930's.

Our candlesticks have candle ejectors and are hand made just like the old ones. They are made of heavy solid brass material, and are polished and lacquered for a lasting finish. Their traditional styling will bring beauty and romance to your table.



Victorian  
"Diamonds"  
Pattern



"Diamond Princess"  
11" height

No. 90000G



"Queen of Diamonds"  
11 5/8" height

No. 90001G



"King of Diamonds"  
12 1/2" height

No. 90002G

Early American  
Pattern



9 3/4" height

No. 90006G



10 3/4" height

No. 90007G



11 1/2" height

No. 90008G

Early American  
"Beehive" Pattern



7 5/8" height

No. 90003G



9 1/2" height

No. 90004G



## Transitional – Candlestick Lamps

CANDLESTICKS CONVERTED TO ELECTRIC LIGHTING – CIRCA 1920 TO THE PRESENT

When electricity was made available at the turn of the century, some Americans converted their old Kerosene Lamps and Candlesticks to electricity. We offer a few examples of the tall and graceful Candlestick Lamps.



14 3/4" Early American "Beehive" Pattern Candlestick Lamp, solid brass pol. and lacq. finish, with eggshell color Shantung Silk candle clip shade. Electrified. Shade size: 3" X 6" X 5" (#00686).

**No. 69106C** – Complete with shade

**No. 69106** – Less shade\*



23 1/2" "Early American" Pattern Candlestick Lamp, solid brass pol. and lacq. finish, with eggshell color Shantung Silk washer fitter shade. Electrified. Shade size: 5" X 10" X 8" (#07166).

**No. 69100C** – Complete with shade

**No. 69100** – Less shade\*



24" Victorian "Diamond Princess" Pattern Candlestick Lamp, solid brass pol. & lacq. finish with eggshell color Shantung Silk washer fitter shade. Electrified. Shade size: 5" X 10" X 8" (#06933).

**No. 69103C** – Complete with shade

**No. 69103** – Less shade\*

\*For a Selection of Alternate Fabric Shades, please see B&P Lamp Supply's Lampshade And Finial catalog, pages F-1 thru F-25.

# Transitional – Candlestick Lamps

CANDLESTICKS CONVERTED TO ELECTRIC LIGHTING – CIRCA 1920 TO THE PRESENT



25 1/2" "Early American" Pattern Candlestick Lamp, solid brass pol. and lacq. finish, with eggshell color Shantung Silk washer fitter shade. Electrified. Shade size: 5" X 10" X 8" (#07166).  
**No. 69102C** – Complete with shade  
**No. 69102** – Less shade\*



24 3/4" Victorian "Queen of Diamonds" Candlestick Lamp, solid brass pol. and lacq. finish, with eggshell color Shantung Silk washer fitter shade. Electrified. Shade size: 5" X 10" X 8" (#06933).  
**No. 69104C** – Complete with shade  
**No. 69104** – Less shade\*



22 3/4" Early American "Beehive" Pattern Candlestick Lamp, solid brass pol. & lacq. finish, with eggshell color Shantung Silk washer fitter shade. Electrified. Shade size: 5" X 10" X 8" (#06907).  
**No. 69107C** – Complete with shade  
**No. 69107** – Less shade\*



24 3/4" "Early American" Pattern Candlestick Lamp, solid brass pol. and lacq. finish, with eggshell color Shantung Silk washer fitter shade. Electrified. Shade size: 5" X 10" X 8" (#07166).  
**No. 69101C** – Complete with shade  
**No. 69101** – Less shade\*

26 1/4" Victorian "King of Diamonds" Candlestick Lamp, solid brass pol. and lacq. finish, with eggshell color Shantung Silk washer fitter shade. Electrified. Shade size: 5" X 12" X 9" (#06934).

**No. 69105C** – Complete with shade  
**No. 69105** – Less shade\*



\*For a selection of alternate fabric shades please see B&P Lamp Supply, Inc. Lamp Shades and Finials catalog pages F-1 thru F-25.

## Astral or Solar Lamp – Circa 1830

Before 1800, American lighting was fairly primitive, consisting largely of candlelight and whale oil burning lamps. Around 1800, the Argand burner was developed which revolutionized lighting. Although the Argand burner was fueled by whale oil, it burned much brighter than other lighting before its time. A frosted glass shade was used to diffuse the light and to reduce the glare. As a result, table lamps evolved into beautiful accessories having both function and form. Table lamps of the period having Argand burners were known as Astral or Solar lamps.

With the exception of the Argand burner, our Astral lamp has essentially the same decorative elements as the original lamps; white marble bases, solid brass base, column and font, cut crystal prisms, and hand blown and frosted, copper wheel engraved glass shade. The Astral lamp is a classic American table lamp. Lamps noted as Limited Edition are to be limited to no more than 1000 pcs and will not be made again.



### “New Englander”

**No. 69035B** – Astral style table lamp with 6" fitter hand cut “Vintage” design shade with plain top, hand cut European made spear crystal prisms, marble base and solid brass polished and lacquered hardware, 28" ht. Electrified.

**No. 69035** – Lamp less shade

**No. 00679** – (Shade Only) 6 1/8" fitter plain-top Astral shade with “Vintage” cut & polished design.



### “New Englander”

**No. 69035C** – Astral style table lamp with 6" fitter hand cut “Vintage” design shade with scalloped top, hand cut European made spear crystal prisms, marble base and solid brass polished and lacquered hardware, 28" ht. Electrified.

**No. 69035** – Lamp less shade

**No. 00678** – (Shade Only) 6 1/8" fitter scalloped-top Astral shade with “Vintage” cut & polished design.



**“Bostonian”** Astral style table lamp with 6" fitter, hand-cut “Lyre” design shade, hand cut European made spear crystal prisms, marble base and solid brass polished and lacquered hardware, with your choice of Ruby or Cobalt Blue glass insert in the column, 28" ht. Electrified. Limited Edition.

**No. 69039C** – Complete with Cobalt Blue color glass column insert.

**No. 69037V** – As above but w/o shade

**No. 69039R** – Complete with Ruby color glass column insert.

**No. 69038V** – As above but w/o shade

**No. 00676** – (Shade Only) 6 1/8" fitter Astral shade with early and original “Lyre” cut and polished design.



**“Bostonian”** Astral style table lamp with 6" fitter, hand-cut “Bellflower” design shade, hand cut European made colonial style crystal prisms, marble base and solid brass polished and lacquered hardware, with your choice of Ruby or Cobalt Blue glass insert in the column, 28" ht. Electrified. Limited Edition.

**No. 69036C** – Complete with Cobalt Blue color glass column insert.

**No. 69037** – As above but w/o shade

**No. 69036R** – Complete with Ruby color glass column insert.

**No. 69038** – As above but w/o shade

**No. 00672** – (Shade Only) 6 1/8" fitter Astral shade with early and original “Bellflower” cut and polished design.



## Early American or Country Style Mammoth And Cast Iron Hanging Lamps Circa 1860 – 1880



A.)

Being a versatile decorating element, cast iron fixtures are sought after today by anyone wanting to give their home an Early American, Country or Victorian look. Our cast iron wall brackets and hanging lamps are exact replicas of the original lamps made in America over 100 years ago. The iron and the glass components are all hand made, having been cast and blown from early pattern molds.



B.)

**A.) No. 69123C** – Mammoth Style hanging Lamp, Solid brass polished and lacquered embossed Mammoth style font with central draft burner, brass frame, canopy, and smoke bell. 20" dia. embossed tin shade with antique green painted finish. 42" drop, Electrified

**No. 69123B** - *For extra illumination*, Mammoth font is wired with a 50 watt flood bulb mounted in a downward position in the bottom of the font.



C.)

**B.) No. 69122C** – Mammoth Style hanging Lamp, Solid brass polished and lacquered embossed Mammoth style font with central draft burner, brass frame, canopy, and smoke bell. Has USA-made 14" dia. hand blown opal glass shade. 42" drop, Electrified

**No. 69122B** - *For extra illumination*, Mammoth font is wired with a 50 watt flood bulb mounted in a downward position in the bottom of the font.

**C.) No. 69121B** – Bradley & Hubbard style counterweight lamp. Cast iron frame w/American made hand painted "Antique Roses" on opal background, opal font and smoke bell. 31" drop, Electrified (Circa 1870).



D.)

**D.) No. 69121C** – Bradley & Hubbard style counterweight lamp. Cast iron frame w/American made opal shade, font and smoke bell. 31" drop, Electrified (Circa 1870)

# Early Victorian Cast Iron Lamp & Wall Brackets

Circa 1860 – 1880

Available 5/15/04



**No. 63322C** – Cast iron bracket lamp with hand blown opal shade and font. Extends 13" from wall. Electric.  
**No. 63322** – less 7" fitter shade\*



**No. 63314C** – Cast iron bracket lamp with Bird & Floral motif & hand blown opal shade and font. Extends 13" from wall. Electric.  
**No. 63314** – less 7" fitter shade\*



**No. 69126C** - Victorian style, cast iron hanging lamp reproduction with opal glass shade and smoke bell and clear glass font. This hanging lamp is very impressive, and it coordinates beautifully in Country, Victorian or Cabin settings. 36 1/2" drop, 19 1/2" spread, Electrified. (Circa 1880)

**No. 63316C** – Iron wall bracket lamp with 7" fitter, opal glass shade and font. Extends 9 1/2" from wall. Electric.  
**No. 63316** – Less shade\*



\*For a selection of other glass lampshades, please see B & P Lamp Supply's "Lamp Glass" catalog, pages G-2, G-10, & G-13 thru G-16 & G-46 - G47.



**No. 63318** – Cast Iron wall bracket with hand blown mirror glass reflector. Extends 12" from the wall. Has #2 oil burner. Circa 1880.



Solid cast brass wall bracket with 7" fitter hand blown cased green over opal glass shade and clear font. Electric. Extends 11" from the wall.  
**No. 63323C** – Complete with shade  
**No. 63323** – Less shade\*



**No. 63317**– Reflector type oil burning wall bracket. Has hand blown glass mirror reflector, clear font, and beaded top chimney. Extends 11".



# Early American & Victorian Oil Lamps

## Circa 1850's – 1940's

**A**nother revolution in American lighting took place in the 1850's when coal oil or kerosene was discovered as a reliable source of fuel. The majority of our oil lamp patterns originate from the period 1860-1900. Literally thousands of patterns were originally made in a variety of fantastic colors. We have endeavored to bring back replicas of the more beautiful and famous patterns from that period. Our oil lamp patterns are all hand made with mouth blown glass fonts and pressed glass bases. The collars and burners used are solid brass and are the best available. To complete the lamp set, many lamps include matching hand made glass "Chimney Shades".

ALL LAMPS ARE COMPLETE WITH SOLID BRASS BURNER, WICK AND CHIMNEY



"Heart & Star" Pattern with hand made crimped top chimney. 17" ht.  
**No. 67213C** – Clear  
**No. 67211C** – Med. Blue  
**No. 67214C** – Sage Green  
**No. 67215C** – Cobalt Blue  
**No. 67219C** – Pink Crystal



"Daisy" Pattern with "Roses" chimney shade, 20" ht.  
**No. 67223C** – Clear  
**No. 67221C** – Med. Blue  
**No. 67224C** – Sage Green  
**No. 67229C** – Pink Crystal



"Prince Edward" Pattern with beaded top chim. 19 1/2" ht.  
**No. 67244C** – Sage Green  
**No. 67241C** – Med. Blue  
**No. 67243C** – Clear  
**No. 67249C** – Pink Crystal



Small "Princess Feather" Pattern w/matching chimney shade, 17" ht.  
**No. 67205C** – Cobalt Blue  
**No. 67203C** – Clear  
**No. 67204C** – Sage Green  
**No. 67209C** – Pink Crystal

**No. 67202C** – Genuine Ruby Glass, Small "Princess Feather" Pattern with matching chimney shade, 17" ht.



Early Sandwich Pattern with plain top chimney (Originally Whale Oil), 19 1/2" ht.  
**No. 67455C** – Cobalt Blue  
**No. 67453C** – Clear

**Warning:** To avoid fire hazard never leave burning oil lamp unattended.



# Early American & Victorian Oil Lamps

Circa 1850's – 1940's (WITH SOLID BRASS OIL BURNERS)



**No. 67432C** – Genuine Ruby Glass “Sweetheart” Pattern lamp with matching chimney shade, 18" ht.



“Tall Princess Feather” Pattern with matching clear & frosted chimney shade, 19" ht.

- No. 67404C** – Sage Green
- No. 67401C** – Med. Blue
- No. 67403C** – Clear
- No. 67405C** – Cobalt Blue
- No. 67409C** – Pink Crystal

Available 5/15/04



“Coolidge Drape” pattern oil lamp with matching clear chimney shade, 18 1/4" ht.

- No. 67533B** - Crystal
- No. 67532B** - Genuine Ruby
- No. 67531B** - Med. Blue
- No. 67534B** - Sage Green
- No. 67537B** - Amber

“Princess Feather” Pattern with matching chimney shade, 19" ht.

- No. 67509C** – Pink Crystal
- No. 67500C** – Lt. Blue
- No. 67501C** – Med. Blue
- No. 67503C** – Crystal
- No. 67504C** – Sage Green
- No. 67505C** – Cobalt Blue
- No. 67506C** – Lt. Jade Green
- No. 67507C** – Amber



**No. 67502C** – Genuine Ruby Glass “Princess Feather” Pattern with matching chimney shade, 19" ht.

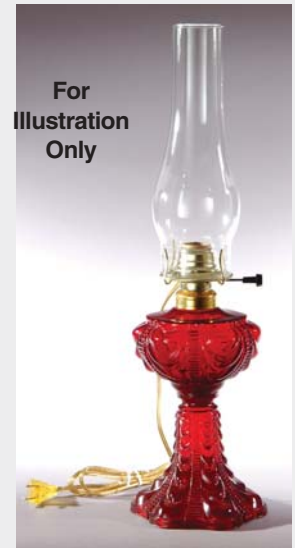
**Warning:** To avoid fire hazard never leave burning oil lamp unattended.

# Transitional – Oil Lamps Converted to Electric Lighting - Circa 1920's to Present

**W**hen electricity became widely available, many Americans started converting their early oil burning lamps. Paul O. Barnes, one of the founders of B&P Lamp Supply Inc., remembers the difficult job of hand making a “cut out” burner. Paul states “In the late 1940's and 1950's customers would bring in their early oil lamps with the original oil burners for conversion to electricity. With a pocketknife, I would cut out the oil burner's brass wick channel, cone and turn knob, which would leave an opening for the insertion of a socket and electrical cord. Thankfully, our “cut out” burners are all machine-stamped these days.”

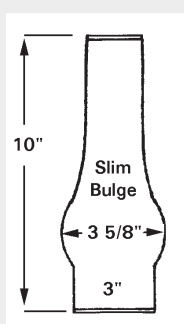
The “Oil Lamp” designs shown on this page were originally made about 1880-1910. As shown here, we offer our customer the ability to add an electrified #2 burner and chimney and use their own shade – or convert the lamp to oil burning.

## All Lamps Are With Solid Brass Collars

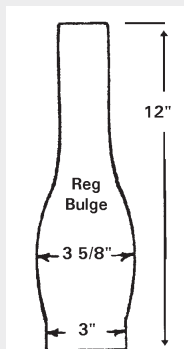


“Princess Feather” Pattern,  
with #2 collar, 9 1/2" ht.  
**No. 67504** – Sage Green  
**No. 67500** – Lt. Blue  
**No. 67501** – Med. Blue  
**No. 67502** – Genuine Ruby  
**No. 67503** – Clear  
**No. 67505** – Cobalt Blue  
**No. 67506** – Lt. Jade Green  
**No. 67507** – Amber  
**No. 67509** – Pink Crystal

“Coolidge Drape” Pattern,  
with #2 collar, 9 1/2" ht.  
**No. 67537** – Amber  
**No. 67531** – Med. Blue  
**No. 67532** – Genuine  
Ruby  
**No. 67533** – Clear  
**No. 67534** – Sage Green



**No. 57946** –  
3" X 10" Slim  
Bulge Chimney,  
Clear



**No. 57954** –  
3" X 12" Regular  
Bulge Chimney,  
Clear

No. 2 **Brass Plated** "Queen Anne" style electrified burner. Beautiful styling and heavy duty construction make this a superior brass plated electrified burner. Fits most No. 2 size collars. Assembled with U.L. listed 8 ft. cord, 1 3/16" diameter threaded base, and accepts 3" dia. chimneys. Fits the following parts:

Chimneys: no. 57932, 57944, 57946, 57954, 57972, 57953, 57940, and all 3" base chimneys.

Tripods: no. 12713, 12719

Shade ring holders: no. 10722, 10734

Ball Shade Holders: no. 10780, 10790, 10790G, 10710

Collars: no. 20001, 20002, 20012, 20017, 20022

Your choice of cord color.

**No. 30180** - clear silver cord

**No. 30181** - brown cord

**No. 30182** - white cord

**No. 30183** - clear gold cord

**No. 30184** - black cord



**No. 12621** – #2 Brass Plated Oil Burner. Comes with wick and removable screw on collar. A well made, functional burner that will fit most #2 collars with a 1 3/16" dia. threaded base. Accepts 3" diameter base chimneys.

See page R-28 for More  
Oil Lamp Fonts!

# Transitional – Oil Lamps Converted to Electric Lighting - Circa 1920's to Present



“Daisy” Pattern Lamp, with #2 collar, 10 1/2" ht.  
**No. 67221** – Med. Blue  
**No. 67223** – Clear  
**No. 67224** – Sage Green  
**No. 67229** – Pink Crystal



“Prince Edward” Pattern, with #2 collar, 10 1/2" ht.  
**No. 67249** – Pink Crystal  
**No. 67241** – Med. Blue  
**No. 67243** – Clear  
**No. 67244** – Sage Green



“Sweetheart” Pattern, with #2 collar, 9" ht.  
**No. 67433** – Clear  
**No. 67431** – Med. Blue  
**No. 67432** – Genuine Ruby  
**No. 67434** – Sage Green  
**No. 67435** – Cobalt Blue  
**No. 67439** – Pink Crystal



Tall “Princess Feather” Pattern, with #2 collar, 10 1/2" ht.  
**No. 67405** – Cobalt Blue  
**No. 67401** – Med. Blue  
**No. 67403** – Clear  
**No. 67404** – Sage green  
**No. 67409** – Pink Crystal

## All Lamps Are With Solid Brass Collars



**No. 67443** – Clear  
**No. 67441** – Med. Blue  
**No. 67442** – Genuine Ruby  
**No. 67444** – Sage Green

“Bull's-eye  
 Fine Detail”  
 Pattern,  
 with #2  
 collar,  
 11" ht.

“Princess Feather” Pattern Glass Lamp with matching pattern satin crystal 10" fitter shade, #2 electrified burner, tripod and chimney. 23" ht. This lamp pattern was first made by the Consolidated Lamp Co., Coraopolis, Pa. (Circa 1890).  
**No. 68505C** – Complete with Cobalt Blue color base  
**No. 68500C** – Complete with Lt. Blue color base  
**No. 68501C** – Complete with Med. Blue color base  
**No. 68502C** – Complete with Genuine Ruby base  
**No. 68503C** – Complete with Clear color base  
**No. 68504C** – Complete with Sage Green color base  
**No. 68507C** – Complete with Amber color base  
**No. 68509C** – Complete with Pink Crystal color base



See pages R-27, R-63 & R-67 for burners & chimneys to complete these oil fonts!



# Circa 1940's Pattern Glass Lamps

These Lamps Are Manufactured Solely by B & P Lamp Supply, Inc.



Lincoln Drape Pattern Glass Lamp\*\* with 10" satin clear panel shade with ruby hand painted roses. 25" ht.  
**No. 69572C** – Complete  
**No. 69572** – Less shade\*



Lincoln Drape Pattern Glass Lp\*\* with 10" satin clear panel shade with Cobalt Blue hand painted roses. 25" ht.  
**No. 69575C** – Complete  
**No. 69575** – Less shade\*



Lincoln Drape Pattern Glass Lp\*\* with 10" crystal clear panel shade. 25" ht.  
**No. 69573C** – Complete  
**No. 69573** – Less shade\*

All lamps on this page have been converted to electric lamps with all brass hardware & hand blown chimney



Diamond Quilted Pattern Genuine Ruby Glass Lamp\*\* with 10" cased opal shade. 25" ht.  
**No. 69602C**– Complete with shade  
**No. 69602** – Less shade\*  
**No. 69603C** – Cry. lamp base with cased ruby shade.  
**No. 69603** – Cry. Lamp Base less shade\*  
**No. 69605C** – Cobalt Blue Lamp base with cased opal shade  
**No. 69605** – Cobalt Blue Lp. base less shade\*

Vertique Pattern Clear Glass Lamp\*\* with 10" fitter, cased Ruby over opal shade. 25" ht.  
**No.69613C** – Complete with shade  
**No. 69613** – Less shade\*  
**No. 69612C** – Ruby Glass Lamp base with cased opal shade  
**No. 69612** – Ruby Lamp base less shade\*  
**No. 69615C** – Cobalt Blue lamp base with cased opal shade  
**No. 69615** – Cobalt Blue Lamp base less shade\*

\*For a selection of other glass lampshades, please see B&P Lamp Supply's "Lamp Glass" Catalog – pages G87-G89.



\*\*The products identified in this advertisement are manufactured by B&P Lamp Supply, Inc. and are not licensed, inspected, or warranted by Aladdin Industries, LLC. They should not be confused with Aladdin® brand products or parts manufactured by Aladdin Mantle Lamp Co. of Clarksville, Tennessee. Aladdin® is a registered trademark of Aladdin Industries LLC.

# Circa 1940's Pattern Glass Lamps

These Lamps Are Manufactured Solely by B & P Lamp Supply, Inc.

Available 5/15/04



Vertique Pattern pink moonstone color lamp\*\* with pink cased glass rib shade and beautiful solid brass hardware. 25 1/2" ht.  
**No. 68610C** - Complete with shade  
**No. 68610** - less 10" fitter shade



Diamond Quilted Pattern green moonstone color lamp\*\* with hand painted "Rose Garland" melon shade with green ribbon and satin white background. 25" ht. Comes with solid brass hardware.  
**No. 68601C** - Complete with shade  
**No. 68601** - less 10" fitter shade

Available 5/15/04



Diamond Quilted Pattern pink moonstone color lamp\*\* with pink cased glass shade. 25" ht. Comes with solid brass hardware.  
**No. 68600C** - Complete with shade  
**No. 68600** - less 10" fitter shade

All lamps on this page have been converted to electric lamps with all brass hardware & hand blown chimney



Light Jade Green Princess Feather pattern lamp with inside hand painted "Roses" Pairpoint style, etched & clear glass lampshade. 24" height.  
**No. 68506C** - Complete with shade  
**No. 68506** - Less 10" fitter shade  
**No. 67506** - Base only - light Jade Green

Vertique Pattern green moonstone color lamp\*\* with style opal glass shade and beautiful solid brass hardware. 25 1/2" ht.  
**No. 68614C** - Complete with shade  
**No. 68614** - less 10" fitter shade



\*For a selection of other glass lampshades, please see B&P Lamp Supply's "Lamp Glass" Catalog - pages G87-G89.

\*\*The products identified in this advertisement are manufactured by B&P Lamp Supply, Inc. and are not licensed, inspected, or warranted by Aladdin Industries, LLC. They should not be confused with Aladdin® brand products or parts manufactured by Aladdin Mantle Lamp Co. of Clarksville, Tennessee. Aladdin® is a registered trademark of Aladdin Industries LLC.

# Early American & Victorian Miniature Oil Lamps

Circa 1850's – 1940's



"Autumn Harvest" 11" ht.  
**No. 67142C** - Genuine Ruby  
**No. 67145C** - Cobalt Blue  
**No. 67146C** - Pink over Opal



"Garden Floral" 9 3/4" ht.  
**No. 67112C** - Genuine Ruby  
**No. 67115C** - Cobalt Blue  
**No. 67117C** - Amethyst



"Beaded Floral" 10" ht.  
**No. 67126C** - Pink over Opal  
**No. 67127C** - Amethyst



"Owl" 9 3/4" ht.  
**No. 67232C** - Genuine Ruby  
**No. 67237C** - Clear over Opal



"Beaded Drape" 10 3/4" ht.  
**No. 67132C** - Genuine Ruby  
**No. 67136C** - Pink over Opal



"Daisies & Vine" 9 1/4" ht.  
**No. 67256C** - Sat. Pink over Opal  
**No. 67257C** - Amethyst  
**No. 67258C** - Sat. Blue over Opal



**No. 67307C** - Opal glass  
 Victorian Design, 9" ht.



"Beads & Fleur-de-lis" 9 7/8"  
**No. 67392C** - Genuine Ruby  
**No. 67395C** - Cobalt Blue  
**No. 67396C** - Sat. Pink over Opal

**Warning:** To avoid fire hazard never leave burning oil lamp unattended.



# Early American & Victorian Miniature Oil Lamps

Circa 1850's – 1940's

One of the most popular areas of collecting in American antique lighting is the miniature oil lamps. As in the standard size oil lamps, hundreds of miniature patterns were originally made in many beautiful colors. There are a few theories concerning the original purpose of the miniature lamp, but many antique dealers believe they were used as a nightlight in a child's room. When lit they emit a warm and comforting glow throughout the room.

We complete our reproduction miniature oil lamps with solid brass miniature burners, tripods and collars. All lamps are functional. The solid brass Gem Arctic, Nutmeg or Acorn style burners are all working burners with cotton wicks. The glass patterns are all mouth blown and the lamps are available in a variety of vivid colors. Our patterns range from the patriotic "Shield and Star" to the romantic "Sweetheart" to the nostalgic "Twinkle". We hope that you will find a pattern that will light your fancy.



No. 67367C –  
*Amethyst*



No. 67362C –  
*Genuine Ruby*



No. 67337C –  
*Amethyst*



No. 67335C –  
*Cobalt Blue*



No. 67332C –  
*Genuine Ruby*

Miniature glass oil lamp & chimney shade with embossed "Twinkle & Stars" design and solid brass Acorn burner hardware, 7" ht.

Miniature glass oil lamp & chimney shade with embossed "Daisies" design and solid brass Acorn burner hardware, 8" ht.

**Warning:** To avoid fire hazard never leave burning oil lamp unattended.



No. 67352C –  
*Genuine Ruby*



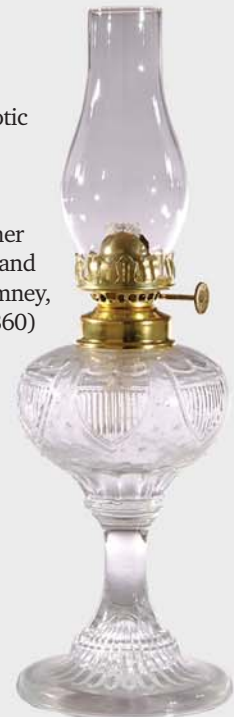
No. 67356C – *Pink over opal, cased*



No. 67357C –  
*Amber*

Miniature glass oil lamp & chimney shade with embossed "Violets" design and solid brass Gem Arctic burner hardware, 8 1/4" ht.

Miniature Patriotic "Shield & Star" pattern oil lamp with solid brass Gem Arctic burner hardware and hand blown clear chimney, 12" ht. (Circa 1860)



No. 68103 – *Clear*  
No. 68105 – *Cobalt Blue*  
No. 68102 – *Genuine Ruby*

# Early American & Victorian Miniature Oil Lamps

Circa 1850's – 1940's



**No. 67312C** –  
*Genuine Ruby*

Miniature glass oil lamp with embossed "Bull's-eye" pattern, solid brass Acorn burner hardware, and clear hand blown chimney, 10 1/2" ht.



**No. 67317C** – *Amber*  
**No. 67315C** – *Cobalt Blue*  
*(not pictured)*

**Warning:**  
To avoid fire hazard never leave burning oil lamp unattended.



**No. 67322C** –  
*Genuine Ruby*

Miniature glass oil lamp & chimney shade with embossed "Sweetheart" pattern, solid brass Acorn burner hardware, 9 1/2" ht.



**No. 67327C** – *Amethyst*  
**No. 67325C** – *Cobalt Blue*  
*(not pictured)*

**No. 67328C** – *Pink over Opal cased font & chimney, with clear glass base (not pictured)*



**No. 67372C** –  
*Genuine Ruby*



**No. 67375C** –  
*Cobalt Blue*



**No. 67377C** –  
*Amber*

Miniature glass oil lamp & shade with embossed "Forget-Me-Nots" design, solid brass nutmeg burner, tripod, wick, and clear chimney, 9" ht.



**No. 67387C** –  
*Amber*



**No. 67385C** –  
*Cobalt Blue*



**No. 67382C** –  
*Genuine Ruby*

Miniature glass oil lamp & chimney shade with embossed "Forget-Me-Nots" design, solid brass Acorn burner hardware, 8" ht.



**No. 67341C** –  
*Amethyst*



**No. 67346C** –  
*Pink over Opal, cased*



**No. 67342C** –  
*Genuine Ruby*



**No. 67347C** –  
*Amber*

Miniature glass oil lamp & shade with embossed "Plume" design, solid brass nutmeg burner, tripod, wick and clear chimney, 9 3/4" ht.

**New!**

**No. 67345C** –  
*Cobalt Blue*  
*(Not Pictured)*



# Miniature Brass and Nickel Plated Lamps

(NOTE: These Brass and Nickel Plated Lamps are for Display Only - \*They Will Not Hold Oil.\*)

## Shade Color Letter Code

<b>A</b> - with Amber Shade	<b>R</b> - with Ruby Shade
<b>B</b> - w/Sat. Blue over Opal Shade	<b>S</b> - w/Satin Pink over Opal Sh.
<b>C</b> - with Cobalt Blue Shade	<b>V</b> - with Amethyst Shade
<b>E</b> - with Crystal Etch Shade	<b>W</b> - with Clear over Opal Sh.
<b>P</b> - with Pink over Opal Shade	



Embossed Early American, 12 ht.

-Lamps with Brass Base, your choice of shade color.

**No. 61110A**    **No. 61110R**  
**No. 61110E**    **No. 61110V**  
**No. 61110P**    **No. 61110W**  
**No. 61140** - less shade

-Lamps with Nickel Plated Base, your choice of shade color.

**No. 61210A**    **No. 61210R**  
**No. 61210E**    **No. 61210V**  
**No. 61210P**    **No. 61210W**  
**No. 61240** - less shade

**All Nickel Plated Lamps on this page come with matching nickel plated burners & tripods**



"Rayo" Style, 9 1/2"

-Lamps with Brass Base, your choice of shade color.

**No. 61120A**  
**No. 61120C**  
**No. 61120E**  
**No. 61120R**  
**No. 61120W**  
**No. 61150** - less shade

**Warning:** To avoid fire hazard never leave burning oil lamp unattended.

-Lamps with Brass Base, your choice of shade color.

**No. 61113A**    **No. 61113R**  
**No. 61113C**    **No. 61113V**  
**No. 61113E**  
**No. 61143** - less shade

-Lamps with Nickel Plated Base, your choice of shade color..

**No. 61213A**    **No. 61213R**  
**No. 61213C**    **No. 61213V**  
**No. 61213E**  
**No. 61243** - less shade



Embossed Finger Lamp, 9" ht.

-Lamps with Brass Base, your choice of shade color.

**No. 61112A**    **No. 61112R**  
**No. 61112C**    **No. 61112V**  
**No. 61112E**  
**No. 61142** - less shade

-Lamps with Nickel Plated Base, your choice of shade color.

**No. 61212A**    **No. 61212R**  
**No. 61212C**    **No. 61212V**  
**No. 61212E**  
**No. 61242** - less shade



Embossed "Butterflies", 9 3/4" ht.

-Lamps with Brass Base, your choice of shade color.

**No. 61111B**  
**No. 61111S**  
**No. 61111V**  
**No. 61141** - less shade

-Lamps with Nickel Plated Base, your choice of shade color.

**No. 61211B**  
**No. 61211S**  
**No. 61211V**  
**No. 61241** - less shade

Embossed "Christmas Scene", 11 1/2" ht.



Font w/  
Embossed  
Christmas  
Scenes!



# American Student and Stand Lamps (circa 1870-1900)

## Solid Brass



*Adjustable  
height  
19 1/2" to 28".  
(circa 1880)  
Electric.*

**"West Point"** Manhattan "Perfection" style, single student lamp with 7" fitter cased student shade. Solid brass, polished and lacquered finish.  
**No. 69041C** – with cased green shade (pictured)  
**No. 69041B** – with cased ruby shade  
**No. 69041** – Less shade\*



### **"West Point"**

Manhattan "Perfection" style, double student lamp with 7" fitter cased ruby rib shades. Solid brass, polished and lacquered finish. Adjustable height 19 1/2" to 28". (circa 1880) Electric.

**No. 69045C** – with cased ruby shades (pictured)  
**No. 69045B** – with cased green shades  
**No. 69045** – Less shade\*

\*For a selection of alternative glass shades please see the B&P Lamp Supply, Inc. "Lamp Glass" Catalog.



### **"Richmond"**

Solid brass – embossed "B&H" style table lamp with 10" fitter cased green melon shade. The embossed "Daisies" motif, which is highlighted by a light antiqued finish make this an exceptionally attractive Victorian style table lamp. 23" height. (circa 1890) Electric.

**No. 69044M** – Complete with shade  
**No. 69044** – Less shade\*

### **"Richmond"**

Solid brass – embossed "B&H" style table lamp with 10" fitter cased green rib shade. The embossed "Daisies" motif, which is highlighted by a light antiqued finish make this an exceptionally attractive Victorian style table lamp. 23" height. (circa 1890) Electric.

**No. 69044D** – Complete with shade  
**No. 69044** – Less shade\*



## American Renaissance Revival “Gone With the Wind” Lamps Circa 1880

Early American style lighting would have been used in homes during the time of the American Civil War. However, when Hollywood adapted Margaret Mitchell's Pulitzer Prize winning novel to their movie, they selected late Victorian "Parlor Lamps" to decorate their movie sets. The beautiful "Parlor Lamps" with matching design ball shades and fonts actually came along after the Civil War. Nevertheless, the popularity of the motion picture was so great that history was rewritten. The motion picture *Gone With the Wind* provided the name and the fame for this very popular style of lighting.

Our lamps are authentically detailed replicas of the original 1880's Parlor Lamps. Like the originals, all glass parts are hand blown. The hardware includes embossed font cap, heavy, lost wax cast base and crown and central draft burner. All lamps are electrified. Lamps noted as Limited Edition will be limited to no more than 1000 pieces and will not be produced again.

### “New Orleans Manor”<sup>©</sup>

27<sup>1</sup>/<sub>4</sub>" height GWW Lamp with 10<sup>1</sup>/<sub>2</sub>" dia. embossed "Asters" ball shade and matching font. Electric. Limited Edition



*Sat. Ruby*

**No. 69001B** – *Satin Ruby* Glass with bronze finish hardware (pictured)  
**No. 69001P** – *Satin Ruby* Glass with solid brass polished and lacquered hardware (also available)



*Sat. Amber*

**No. 69002P** – *Satin Amber* over Opal Cased Glass with solid brass polished and lacquered hardware  
**No. 69002B** – *Satin Amber* over Opal Cased Glass with bronze finish hardware (also available)



*Sat. Pink*

**No. 69000P** – *Satin Pink* over Opal Cased Glass with solid brass polished and lacquered hardware (pictured)  
**No. 69000B** – *Satin Pink* over Opal Cased Glass with bronze finish hardware (also available)

©2002 Copyright Applied For, All rights reserved B&P Lamp Supply, Inc.



## American Renaissance Revival "Gone With the Wind" Lamps



*Sat. Ruby*



*Sat. Pink*

*Sat. Amber*

*Sat. Blue*

### "Georgian"©

29" height GWW Lamp with 10" dia. embossed "Beaded Drapes" ball shade, matching font, and lost wax cast base. Electric. Limited Edition

**No. 69024C** – Clear Genuine Ruby beads with Satin Ruby background, solid brass polished and lacquer hardware.

**No. 69023C** – Clear Pink beads with Satin Pink background, solid brass polished and lacquer hardware.

**No. 69025C** – Clear Amber beads with Satin Amber background, solid brass polished and lacquer hardware.

**No. 69026C** – Clear Blue beads with Satin Blue background, solid brass polished and lacquer hardware.



*Sat. Amber*

*Sat. Blue*

*Sat. Pink*

### "Savannah Rose"©

26 1/2" height GWW Lamp with 10 1/2" dia. embossed "Primrose" ball shade and matching font. Electric. Limited Edition

**No. 69154P** – Satin Amber over Opal Cased Glass with solid brass polished & lacquered hardware (pictured).

**No. 69154B** – Satin Amber over Opal Cased Glass with bronze finish hardware (also available).

**No. 69007P** – Satin Blue over Opal Cased Glass with solid brass polished and lacquered hardware (pictured).

**No. 69007B** – Satin Blue over Opal Cased Glass with bronze finish hardware (also available).

**No. 69155B** – Satin Genuine Ruby Glass with bronze finish hardware (pictured).

**No. 69155P** – Satin Genuine Ruby Glass with solid brass polished & lacquered hardware (also available).



*Sat. Ruby*

©2002 Copyright Applied For, All rights reserved B&P Lamp Supply, Inc.



## American Renaissance Revival “Gone With the Wind” Lamps



*Satin Blue*

### “Tennessee Iris”<sup>©</sup>

30 1/2" height GWW Lamp with 11" dia. embossed “Iris” pattern ball shade and matching font. This lamp was originally designed and manufactured around 1890 by the Pittsburgh Lamp, Brass & Glass Company. Electric. Limited Edition

All with Solid Brass Hardware



*Satin Pink*

*Clear, Satin*

*Satin Ruby*

- No. 69158P** – Satin Blue over Opal Cased Glass with brass polished and lacquered hardware (pictured).
- No. 69158B** – Satin Blue over Opal Cased Glass with bronze finish hardware (also available).
- No. 69012P** – Satin Pink over Opal Cased Glass with brass polished & lacquered hardware (pictured).
- No. 69012B** – Satin Pink over Opal Cased Glass with bronze finish hardware (also available).
- No. 69010P** – Clear Iris Flower on a Satin background with brass polished and lacquered hardware (pictured).
- No. 69010B** – Clear Iris Flower on a Satin background with bronze finish hardware (also available).
- No. 69011B** – Satin Genuine Ruby Glass with bronze finish hardware (pictured).
- No. 69011P** – Satin Genuine Ruby Glass with brass polished & lacquered hardware (also available).



### “Natchez Bell”<sup>©</sup>

31 1/2" height GWW Lamp with 10 1/2" dia. embossed “Victoria” pattern ball shade, matching font, and lost wax cast base. Electric Limited Edition

All with Solid Brass Hardware

- No. 69013B** – Satin Genuine Ruby Glass with bronze finish hardware (pictured).
- No. 69013P** – Satin Genuine Ruby Glass with brass polished and lacquered hardware (also available).

- No. 69014P** – Satin Amber over Opal Cased Glass with brass polished and lacquered hardware (pictured).
- No. 69014B** – Satin Amber over Opal Cased Glass with bronze finish hardware (also available).



©2002 Copyright Applied For, All rights reserved B&P Lamp Supply, Inc.

## American Renaissance Revival “Gone With the Wind” Lamps

### “American Beauty Rose”<sup>©</sup>

27" height GWW Lamp with 10" dia. embossed Roses ball shade & matching font. Electric. Limited Edition



**No. 69250C** – Satin Genuine Ruby Glass with solid brass polished and lacquered hardware. (pictured)

**No. 69251C** – Satin Amethyst with solid brass, polished & lacquered hardware

**No. 69252C** – Satin Pink over opal cased glass with solid brass, polished and lacquered hardware.

### “Saint Louis Baby Face”

27<sup>1</sup>/<sub>2</sub>" height GWW Lamp with 10" dia. embossed “Baby Face” pattern ball shade and matching font. Electric



**No. 69021C** – Satin Amber over Opal Cased Glass with solid brass polished and lacquered hardware.



**No. 69020C** – Satin Genuine Ruby with solid brass polished and lacquered hardware.



# American Renaissance Revival “Gone With the Wind” Lamps

Hand Blown, Early Embossed Patterns



25" Height Lamp with 14" embossed  
“Primrose” pattern dome shade and  
matching font. Solid brass polished and  
lacquered hardware with crystal U-drop  
prisms. Electrified. Limited Edition  
**No. 69029C** – *Satin amber over opal  
glass (pictured)*  
**No. 69022C** – *Satin genuine ruby glass  
(also available).*



30" Height Lamp with 14" embossed  
“Victoria” pattern dome shade and  
matching font. Solid brass polished and  
lacquered hardware with crystal U-drop  
prisms. Electrified. Limited Edition  
**No. 69027C** – *Satin genuine ruby glass  
(pictured).*  
**No. 69028C** – *Satin amber over opal  
glass (also available).*



## Romantic Floral “Gone With the Wind” Lamps Circa 1880

**G**ardening in the Victorian era was as popular then as it is today. In the late nineteenth century Americans especially enjoyed flower gardens. In an effort to bring their gardens indoor, fresh flowers were used inside homes and designed freely on accessories and lamps of the period. Parlor Lamps with rose covered ball shades and fonts were very romantic and the perfect compliment to a Victorian home. They were often used to set the mood for courtship with their hand painted bouquet and soft warm lights.

Our hand-painted GWW lamps are of outstanding quality. The glass components are American made, hand blown opal glass. The decorations are individually hand painted by skilled artists. Most are 4 or 5 color decorations with beautifully detailed climbing roses, bouquets, or chintz designs.

Authentic early styling & solid brass hardware make these Gone-With-The-Wind lamps superior to some G-W-W lamps. Where some manufacturers “cut corners” on quality, we make sure that only quality components are used because *our* customers always seem to know the difference.

### *Hand Painted*



#### **“Antique Roses”**

**No. 69065C** – Hand painted GWW Lamp, light cream to hunter green tint, 28" ht., solid brass polished and lacquered hdwe. Elec. 10<sup>1</sup>/<sub>2</sub>" dia. shade.

#### **“Bridal Roses”**

**No. 69194C** – Hand painted GWW Lamp, pink mist tint, 28" ht., solid brass polished and lacquered hardware. Electric. 10<sup>1</sup>/<sub>2</sub>" dia. shade.

#### **“Duet”**

**No. 69193C** – Hand painted GWW Lamp, satin white to satin tan tint, 28" ht., solid brass polished and lacquered hardware. Electric. 10<sup>1</sup>/<sub>2</sub>" dia. shade.

**Romantic Floral "Gone With the Wind"  
Lamps Circa 1880 (HAND PAINTED)**



**"Bridal Roses"**

**No. 69191C** – Hand painted GWW Lamp, pink mist tint, 26" ht., solid brass polished & lacq. hdwe. Electric. 10" dia. shade

**"Duet"**

**No. 69192C** – Hand painted GWW Lamp, satin white to satin tan tint, 26" ht., solid brass polished & lacq. hdwe. Electric. 10" dia. shade

**"High Hope"**

**No. 69190C** – Hand Painted GWW Lamp, light satin blue tint, 26" ht., solid brass polished & lacq. hdwe. Electric. 10" dia. shade



**"Bridal Roses"**

**No. 69196C** – Hand painted GWW Lamp, pink tint mist, 22 1/2" ht., solid brass polished & lacquered hardware. Electric. 9" dia. shade



**"Duet"**

**No. 69197C** – Hand painted GWW Lamp, satin white to satin tan tint, 22 1/2" ht., solid brass polished and lacquered hardware. Electric. 9" dia. shade

Romantic Floral "Gone With the Wind"  
Lamps - Circa 1880

*Hand Painted*



**"High Hope"**

**No. 69198C** – Hand painted Three-tier GWW Lamp, light satin blue tint, 34" ht., solid brass polished and lacquered hardware. Electric. 10" dia. shade



**"Queen Elizabeth"**

**No. 69170C** – Hand painted Three-tier GWW Lamp, mottled carmine tint, 34" ht., solid brass polished and lacquered hardware. Electric. 10" dia. shade



**"Queen Elizabeth"**

**No. 69068C** – Hand painted 14" dome shade GWW Lamp with U-drop prisms, mottled carmine tint, 28" ht., solid brass polished and lacquered hardware. Electric



# American Renaissance Revival Banquet Lamps

## Circa 1880

**B**y the 1880s American lighting manufacturers began to market lamps for specific rooms of the home. The Banquet Lamp was designed and marketed for the dining room table and sideboard. Banquet Lamps were tall, elegant, and ornate. They were 18" to 30" height at the burner and often times described as the most fabulous table lamps of the Victorian Era.

Our figural Banquet Lamps are exact reproductions of some of the finer lamps of the period. Their cherubic bodies and bases are hand made from lost wax castings and are finished in your choice of either light antique brass or bronze. The lamps include correct central draft type burners and a hand blown 1880's style ball shades. We think they would look beautiful in any room. Lamps noted as Limited Edition will be limited to no more than 1000 pieces and will not be produced again.

\*For a selection of similar glass lampshades and different COLORS, please see pages R-46 & R-47 or B & P Lamp Supply's "Lamp Glass" catalog, pages G-5 thru G-6.

When choosing your own shade, try to use a shade (dia.) size similar to the one pictured on the lamp. This will help keep the lamp looking "balanced".



**"Baltimore Angels"©**

36" height figural Banquet Lamp, lost wax cast kneeling Cherub, 10 1/2" dia. "Beaded Drapery" satin genuine ruby with clear beads ball shade, cast metal hardware with bronze finish. Electric.

**No. 69210C** – Complete with shade  
**No. 69210** – Less shade\*



**"Mobile Boy"©**  
(large)

37 1/2" height figural Banquet Lamp, lost wax cast brass Neptune with urn and conch shell, 10 1/2" embossed "Asters" satin blue over opal ball shade, cast brass hardware with light antique brass finish. Electric.

Limited Edition

**No. 69207C** – Complete with shade  
**No. 69207** – Less shade\*

# American Renaissance Revival Banquet Lamps

## Circa 1880

\*For a selection of similar glass lampshades and different COLORS, please see pages R-46 & R-47 or B & P Lamp Supply's "Lamp Glass" catalog, pages G-5 thru G-6.

When choosing your own shade, try to use a shade (dia.) size similar to the one pictured on the lamp. This will help keep the lamp looking "balanced".



Embossed "Primrose" satin pink over opal, cased glass ball shade. 9" dia., 4" fitter

**"Mobile Boy"®** (small)  
30 1/2" height figural Banquet Lamp, lost wax cast brass Neptune with urn and conch shell, 9" dia. ball shade, solid brass hardware with light antique brass finish. Electric. Limited Edition  
**No. 69205C** – Complete with shade  
**No. 69205** – Less shade\*



10 1/2" dia. embossed "Victoria" pattern genuine satin ruby glass ball shade

**"Charleston Lovers"®**  
(colossal size pictured)  
42 1/2" height figural Banquet Lamp, lost wax cast Cupid with bow and quiver, 10 1/2" dia. embossed "Victoria" pattern genuine satin ruby ball shade, cast metal hardware with bronze finish. Electric. Limited Edition

**No. 69214C** – Complete with shade  
**No. 69214** – Less shade\*

**"Charleston Lovers"®**  
(large size)  
Same as above except 38" height. Limited Edition  
**No. 69216C** – Complete with shade  
**No. 69216** – Less shade\*





\* Use These Fabulous Shades to "Customize" Your Banquet Lamp



Opal Ball Shade with "Peonies" decoration and dresden tint.  
**No. 00979** – 9" dia.  
**No. 05079** – 10" dia.



**No. 00914** – 9" dia. Satin Ruby Embossed "Primrose" Ball Shade with 4" fitter.



**No. 05091** – 10" Shade w/Hand Painted "Victorian Roses", peach & celery tint.



10" Embossed "Cherubs" Ball Shade with 4" fitter  
**No. 05619** – Sat. Amber over Opal Cased  
**No. 05620** – Satin Ruby



Opal Ball Shade with Hand Painted "Queen Elizabeth" w/ mottled carmine tint. 4" fitter  
**No. 00983** – 9" dia.  
**No. 05083** – 10" dia.



Sat. Blue over Opal Cased Embossed "Asters" Ball Shade  
**No. 00909** – 9" dia.  
**No. 05603** – 10" dia.



**No. 05084** – 10" Shade w/Hand Painted "Rambling Roses", cream to hunter green tint.



**No. 05074** – 10" Opal Ball Shade with "Cherubs" decoration on a tan background. 4" fitter



10" dia. Embossed "Beaded Drapes" Ball Shade with 4" fitter  
**No. 05515** – Satin Ruby with Clear beads  
**No. 05516** – Satin Amber with Clear beads  
**No. 05518** – Satin Pink with Clear beads  
**No. 05514** – Satin Blue with Clear beads



\*Use These Fabulous Shades to “Customize” Your Banquet Lamp



10<sup>1</sup>/<sub>2</sub>" dia. Embossed “Quilted Drapes” Shade  
**No. 05615** – Satin Ruby  
**No. 05616** – Sat. Amber over Opal Cased  
**No. 05618** – Sat. Blue over Opal Cased



11" dia. Embossed “Iris” Ball Shade  
**No. 05612** – Satin Blue over Opal Cased



**No. 05069** – 10" Opal Ball Shade with “English Roses” decoration on an ivory to rust tint. 4" fitter



**No. 05085** – 10" Shade w/Hand Painted “Chintz Roses” on an opal background.



**No. 05025** – 10" Shade w/Hand Painted “Bridal Roses”, pink mist tint  
**No. 05116** – 10<sup>1</sup>/<sub>2</sub>" dia.



10<sup>1</sup>/<sub>2</sub>" “Primrose” Shade  
**No. 05608** – Sat. Amber over Opal Cased  
**No. 05607** – Satin Blue over Opal Cased  
**No. 05609** – Satin Pink over Opal Cased



10<sup>1</sup>/<sub>2</sub>" Embossed “Asters” Shade  
**No. 05600** – Satin Pink over Opal Cased  
**No. 05601** – Satin Ruby  
**No. 05603** – Sat. Blue over Opal Cased



**No. 05032** – 10" Shade w/Hand Painted “Navajo Rose”, cream to light brown tint.



**No. 05028** – 10" Shade w/Hand Painted “High Hope”, light satin blue tint.  
**No. 05112** – 10<sup>1</sup>/<sub>2</sub>" dia.

# American Renaissance Revival Banquet Lamps

## Circa 1880

10" dia. "Beaded Drape" satin amber ball shade with clear beads, 4" fitter

Embossed "Primrose" genuine satin ruby glass ball shade. 10 1/2" dia., 4" fitter

Ruby (stained) glass Dot Optic ball shade. 10" dia., 4" fitter



**"Baltimore Angels"®**  
(medium-pictured)

34" height figural Banquet Lamp, lost wax cast brass kneeling Cherub, 10" dia. "Beaded Drape" satin amber with clear beads shade, cast brass hardware with light antique brass finish. Electric.

Limited Edition

**No. 69211C** –

*Complete with shade*

**No. 69211** – *Less shade\**

**"Baltimore Angels"®**

(large size)

Same as above except 36" height.

Limited Edition

**No. 69209C** – *Complete with shade*

**No. 69209** – *Less shade\**



**"Mobile Boy"®**  
(large - pictured)

37 1/2" height Figural Banquet Lamp, lost wax cast Neptune with urn and conch shell, 10 1/2" embossed "Primrose" genuine satin ruby ball shade, cast metal hardware with bronze finish. Electric.

Limited Edition

**No. 69208C** –

*Complete with shade*

**No. 69208** –

*Less shade\**

**"Mobile Boy"®**

(small size)

Same as above except 30 1/2" height and 9" dia. ball shade.

Limited Edition

**No. 69206C** – *Complete with shade*

**No. 69206** – *Less shade\**



**"Charleston Lovers"®**  
(colossal - pictured)

42 1/2" height figural Banquet Lamp, lost wax cast brass Cupid with bow and quiver, ball shade, cast brass hardware with light antique brass finish. Electric.

Limited Edition

**No. 69213B** –

*Complete with shade*

**No. 69213** –

*Less shade\**

**"Charleston Lovers"®**

(large size)

Same as above except 38" height.

Limited Edition

**No. 69215B** – *Complete with shade*

**No. 69215** – *Less shade\**

©2002 Copyright Applied For, All rights reserved B&P Lamp Supply, Inc.

\*For a selection of similar glass lampshades and DIFFERENT COLORS, please see the Pages R-46 & R-47 or B&P Lamp Supply's "Lamp Glass" catalog, pages G-5 thru G-6



## American Renaissance Revival Banquet Lamps Circa 1880

**B**y the 1880's American lighting manufacturers began to market lamps for specific rooms of the home. The Banquet Lamp was designed and marketed for the dining room table and sideboard. Banquet Lamps were tall, elegant, and ornate. They were 18" to 30" height at the burner and often times described as the most fabulous table lamps of the Victorian Era.



25" Brass and Marble Banquet Lamp with U-drop prisms and 10" fitter hand painted "Princess Feather" shade with satin white background. Electric  
**No. 69042C** – Complete with shade  
**No. 69042** – Less shade\*

25" Brass and Marble Banquet Lamp with U-drop prisms and 10" fitter, cranberry (stained) glass dot optic Tam-O-Shanter shade. Electric  
**No. 69042A** – Complete with shade  
**No. 69042** – Less shade\*

32" Solid Cast Brass and Onyx Banquet Lamp with 10" dia. hand painted "Bridal Roses" shade on a pink mist tint. Electric  
**No. 69073C** – Complete with shade  
**No. 69073** – Less shade\*

\*For a selection of other glass lampshades and DIFFERENT  
COLORS/DESIGNS, please see B & P Lamp Supply's "Lamp Glass" catalog.



# American Renaissance Revival Banquet Lamps

## Circa 1880



31" height Wrought Iron Banquet Lamp with brass front and central draft burner and 10" dia. opal shade with "English Roses" decoration on a ivory to rust tint. The black wrought iron stand has a "Vintage" motif and solid brass polished and lacquered embossed front. Electric  
**No. 69015D** – Complete with shade  
**No. 69015** – Less 4" fitter shade\*



25" Solid Brass Small Banquet Lamp with Antique Brass finish and 4" fitter, satin pink over opal, cased glass lampshade with "piecrust" crimped top. Electric  
**No. 69085B** – Complete with shade  
**No. 69085** – Less shade\*



32" Solid Cast Brass and Onyx Banquet Lamp with 10" dia. opal shade with "cherubs" decoration on a tan background. Electric  
**No. 69073E** – Complete with shade  
**No. 69073** – Less 4" fitter shade\*

\*For a selection of other glass lampshades and  
DIFFERENT COLORS/DESIGNS, please see B & P Lamp  
 Supply's "Lamp Glass" catalog.

## Early American Style Library Lamps – Circa 1880

The American Library Lamp was often a focal point in the Library and Dining room of a Victorian home. The better examples of these hanging lamps were even more spectacular than the Banquet table lamps from the same period. Library Lamps were often decorated with embossed fonts and fabulous castings depicting flowers, cherubs, birds, starbursts and dragonflies. Colorful prisms and jewels adorned the shade holder banding. Crowning the Library Lamp was the grandest of all lampshades - the 14" dome. Many embossed and optic patterns were applied to the 14" domes, as well as hand painted floral. Favorite glass colors were cranberry, ruby, blue and pink.



Library Lamp with 14" diameter hand painted dome and matching 3 1/4" fitter font – "Queen Elizabeth" on a mottled carmine tint, and cast brass polished and lacquered "Vintage" pattern frame. Stamped brass polished and lacquered canopy, smoke bell, banding and chain. Crystal U-drop prisms. 33" drop. Electric

**No. 69408C** – Complete with dome shade and font

**No. 69408** – Less dome shade and font\*



Library Lamp with 14" diameter hobnail dome shade with stained cranberry color, cast brass arms depicting the coming of spring and stamped brass embossed "Daisies" motif font. Stamped brass polished and lacquered canopy, smoke bell, banding, and chain. Crystal U-drop prisms. 34 1/2" drop. Electric

**No. 69404D** – Complete with shade

**No. 69404** – Less shade\*\*

\*For a selection of other glass lampshades and fonts, including DIFFERENT COLORS/DESIGNS, please see pages R-53 & R-54 or B & P Lamp Supply's "Lamp Glass" catalog, pages G-35 thru G-38.

\*\*For a selection of other glass lampshades, including DIFFERENT COLORS/DESIGNS, please see pages R-53 & R-54 or B & P Lamp Supply's "Lamp Glass" catalog, pages G-7 thru G-8, and G-35 thru G-38



# Early American Style Library Lamps – Circa 1880



**No. 69406C** – Complete  
w/dome shade  
**No. 69406** – Less shade\*



**No. 69402C** – Complete  
with dome shade  
**No. 69402** – Less shade\*

(above) Library Lamp with 14" diameter cased glass satin blue over opal embossed "Quilted Drapes" pattern dome, cast brass arms depicting the coming of spring and cast brass cherubic font. Stamped brass polished and lacquered canopy, smoke bell, banding and chain. Crystal U-Drop prisms. 34" drop. Electric

(above) Library Lamp with 14" diameter hand painted "Antique Roses" on a satin white to celadon green tinted dome, cast brass filigree arms and stamped brass embossed font. Stamped brass polished and lacquered canopy, smoke bell, banding and chain. Crystal U-drop prisms. 32" drop. Electric



Library Lamp with 14" dia. "English Roses" dome shade with an ivory to rust background, cast brass arms depicting winter scene and stamped brass embossed "Daisies" motif font. Stamped brass polished and lacquered canopy, smoke bell, banding and chain. Crystal U-drop prisms. 34 1/2" drop. Electric  
**No. 69404E** – Complete  
**No. 69404** – Less shade\*

\*For a selection of other glass lampshades, including DIFFERENT COLORS/DESIGNS, please see pages R-53 & R-54 or B & P Lamp Supply's "Lamp Glass" catalog, pages G-7 thru G-8, and G-35 thru G-38.



**\*Use These Fabulous Shades to "Customize" Your Hanging Lamp**

14" Dia. Dome Shades



Embossed "Acanthus Leaves" Dome Shade, 7 1/4" ht.  
**No. 08004** – Sat. Amber over Opal Cased  
**No. 08003** – Satin Ruby



Embossed "Quilted Drapes" Shade, 7 1/4" ht.  
**No. 08238** – Satin Ruby  
**No. 08235** – Satin Blue over Opal Cased



**No. 08312**- 14" Hobnail Dome Shade with stained cranberry color.  
**No. 50905**- Matching font fits hanging lamp frame #60634 (see page H-87). Has No. 2 brass collar.



Embossed "Quilted Drapes" Shade, 7 1/4" ht.  
**No. 08236** – Satin Pink over Opal Cased  
**No. 08234** – Satin Amber over Opal Cased



**No. 08037** – Shade with Hand Painted "Queen Elizabeth" on mottled carmine tint.  
**No. 50237** – Matching font with No. 2 collar



**No. 08061**- 14" Dome Shade with Hand Painted "Bridal Roses", pink mist tint.  
**No. 50261** - Matching font w/No. 2 collar



**No. 08038** – Hand Painted "Victorian Bouquet" on a porcelain blue background.  
**No. 50238** – Matching font with No. 2 collar



**No. 08034** – Shade with "Peonies" decoration on a satin white to celedon green tint.  
**No. 50234** – Matching font w/No. 2 brass collar.

**\*Use These Fabulous Shades to "Customize" Your Hanging Lamp**

14" Dia. Dome Shades



Cased Glass Melon Dome Shade, 7 1/4" ht.  
**No. 08212** – Ruby over Opal  
**No. 08213** – Green over Opal



**No. 08235** – Embossed "Quilted Drapes"  
 Dome Shade, Satin Blue over Opal Cased,  
 7 1/4" ht.



**No. 08044** – Dome w/Hand Painted "Antique  
 Roses" on a satin white to celedon green tint.  
**No. 50244** – Matching font with No. 2 collar



**No. 08033** – Shade with "English Roses"  
 decoration on an ivory to rust tint.  
**No. 50233** – Matching font with No. 2 collar



Rib Shade, 7 1/4" ht.  
**No. 08205** – Pink over Opal With Gold Flakes  
**No. 08203** – Green over Opal Cased  
**No. 08202** – Ruby over Opal Cased  
**No. 08204** – Pink over Opal Cased



Embossed "Asters" Dome Shade, 7 1/4" ht.  
**No. 08217** – Satin Ruby  
**No. 08216** – Satin Pink over Opal Cased



**No. 08045** – Shade w/Hand Painted "Navajo Rose" cream to brown tint.  
**No. 50245** – Matching font with No. 2 collar



**No. 08069** – Shade w/Hand Painted "Garden Bouquet",  
 porcelain blue tint. **No. 50269** – Matching font with No. 2 collar



# Early American Style Library Lamps – Circa 1880



**No. 69405B** –  
Complete with  
dome shade  
**No. 69405** –  
Less shade\*



**No. 69408B** –  
Complete with  
dome shade and  
font  
**No. 69408** –  
Less shade  
and font\*

(above) Library Lamp with 14" diameter ruby (stained) dot optic dome shade, cast brass arms depicting the coming of spring and cast brass cherubic font. Stamped brass polished and lacquered canopy, smoke bell, banding and chain. Crystal U-drop prisms. 33" drop. Electric

(above) Library Lamp with 14" diameter hand painted dome and matching 3 1/4" fitter font – "Garden Bouquet" with cream background, and cast brass polished and lacquered "Vintage" pattern frame. Stamped brass polished and lacquered canopy, smoke bell, banding and chain. Crystal U-drop prisms. 33" Drop. Electric

Library Lamp with 14" diameter cased glass satin pink over opal "Quilted Drape" pattern dome shade, cast brass polished and lacquered "Vintage" pattern frame. Stamped brass polished and lacquered canopy, smoke bell, banding and chain. Pink Crystal tear drop prisms. 33" drop. Electric

**No. 69400C** – Complete with shade  
**No. 69400V** – Less 14" shade

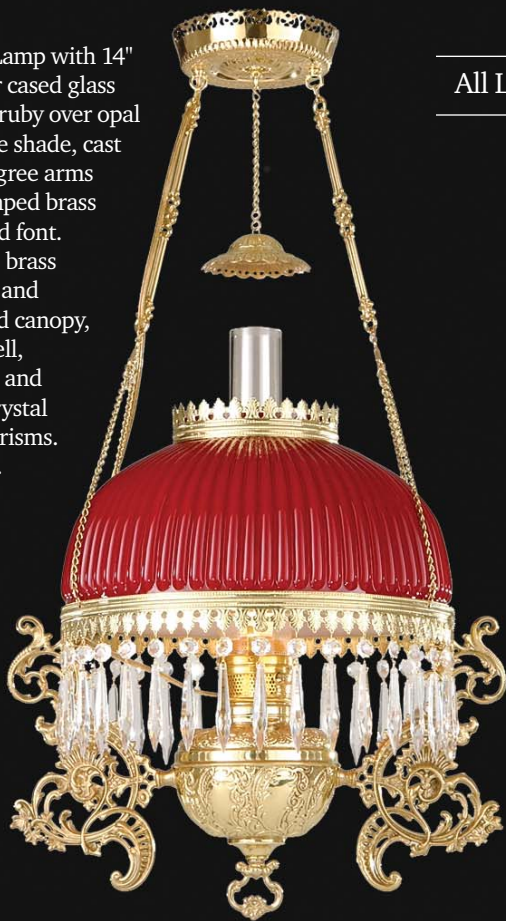


\*For a selection of other glass lampshades and fonts, including DIFFERENT COLORS/DESIGNS, please see pages R-53 & R-54 or B & P Lamp Supply's "Lamp Glass" catalog, pages G-7 thru G-8, and G-35 thru G-38



# Early American Style Library Lamps – Circa 1880

Library Lamp with 14" diameter cased glass genuine ruby over opal Rib dome shade, cast brass filigree arms and stamped brass embossed font. Stamped brass polished and lacquered canopy, smoke bell, banding, and chain. Crystal U-drop prisms. 33" drop.



**No. 69402A** – Complete with shade  
**No. 69402** – Less shade

## All Lamps are Electrified

Library Lamp with 14" diameter hand painted dome - "Bridal Roses" on a pink mist tint, and cast brass arms depicting the coming of spring and stamped brass embossed "Daisies" motif font.



**No. 69404B** – Complete with dome shade  
**No. 69404** – Less shade

Stamped brass polished and lacquered canopy, smoke bell, banding and chain. Crystal U-drop prisms. 34 1/2" drop.

Occasionally Library Lamps were made in a smaller size with a 10" diameter shade. Our small Library Lamps have a 10" fitter shade, crystal U-drop prisms, and a solid brass, polished and lacquered frame. All lamps are electrified.

Library Lamp with 10" fitter hand painted "Rose Garland" melon style shade with rose to satin white tint. 28" drop.

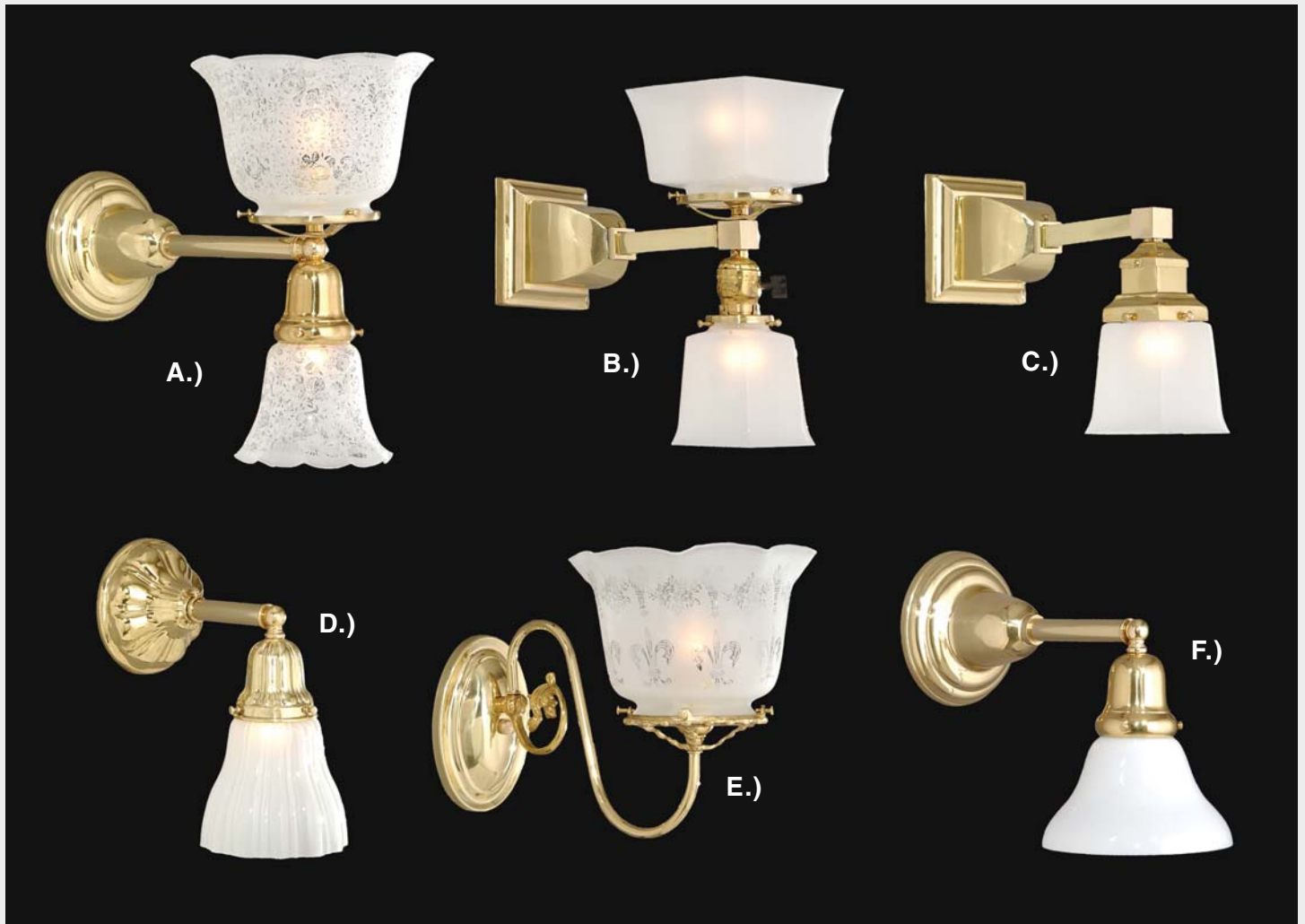


**No. 69413C** – Complete  
**No. 69413** – Less shade

**No. 69150C** – Hall Lamp with 8" diameter stained Cranberry optic shade and adjustable drop from 19 to 29"



## Turn of the Century Wall Fixtures – Circa 1895-1920



**A.)** Combination Gas and Electric Wall Sconce with matching 4" fitter and 2 1/4" fitter shades with crystal etched Victorian Lace decoration. Solid brass polish and lacquer frame, electrified. Extends 14".

**No. 60699C** – Complete with shade

**No. 60699** – Less shade\*

**B.)** Arts and Crafts or Mission style Combination Gas and Electric Wall Sconce with 4" fitter crystal etched inside gas shade, and 2 1/4" fitter crystal etched inside fixture shade. Solid brass polish and lacquer frame, electrified. Extends 11 1/2".

**No. 60691C** – Complete with shade

**No. 60691** – Less shade\*

**C.)** Arts and Crafts or Mission style Early Electric Wall Sconce with 2 1/4" fitter crystal etched inside fixture shade. Solid brass polish and lacquer frame, electrified. Extends 10 1/2".

**No. 60692C** – Complete with shade

**No. 60692** – Less shade\*

**D.)** Sheffield Style Electric Wall Sconce with crystal etched inside fixture shade. Solid brass polish and lacquer frame, electrified. Extends 10 1/2".

**No. 60696C** – Complete with shade

**No. 60696** – Less shade\*

**E.)** Gas Style Sconce with crystal etch Fleur-de-lis design gas shade. Solid brass polish and lacquer frame, electrified. Extends 13 1/2".

**No. 60695C** – Complete with shade

**No. 60695** – Less shade\*

**F.)** Early Electric Sconce with 2 1/4" fitter opal shade. Solid brass polish and lacquer frame, electrified. Extends 12".

**No. 60693C** – Complete with shade

**No. 60693** – Less shade\*

\*For a selection of other glass lampshades,  
please see B & P Lamp Supply's "Lamp Glass" catalog,  
pages G-64 thru G-77 & G-80 thru G-82

## Turn-of-the-Century Gas and Electric Fixtures - Circa 1895-1920

By 1900 electricity lit up many cities of America and powered their streetcars. However, natural gas was still in use in many homes and lighting manufactures were reluctant to risk all their production on electric lighting. As a result, they manufactured both gas and electric fixtures and combination gas and electric fixtures.

**No. 69370C** – Complete with three – 2 1/4" fitter shades and three – 4" fitter gas shades

**No. 69370** – Less shades\*

6-Arm Combination Gas/Electric Style Fixture with Victorian style floral etched shades. High quality brass components have polished & lacquered finish. Electrified. 31" drop.



**No. 69371C** – Complete with six – 4" fitter shades  
**No. 69371** – Less shades\*

6-Arm Classic Gas Style Fixture with Victorian style "Fleur-de-lis" etched shades. High quality brass components have polished and lacquered finish. Electrified. 31" drop.



Arts and Crafts or Mission style Pendant Fixture with 2 1/4" fitter crystal etched inside fixture shades. Brass polished and lacquered frame, electrified.

**No. 69373C** – Complete with shades – 35" drop and 17 3/4" spread

**No. 69373** – Less shades\* – 31 1/2" drop and 16 1/2" spread\*

**No. 69374C** – Complete with shades – 18" drop and 17 3/4" spread

**No. 69374** – Less shades\* – 14 1/2" drop and 16 1/2" spread



Gas Style Hall Light with 4" fitter "Vianne" shade. High quality gas components have polished and lacquered finish. Electrified. 23" drop.

**No. 69418C** – Complete with 4" fitter shade

**No. 69418** – Less shade\*



\*For a selection of other glass lampshades, please see B & P Lamp Supply's "Lamp Glass" Catalog, pages G-64 thru G-77 & G-80 thru G-82



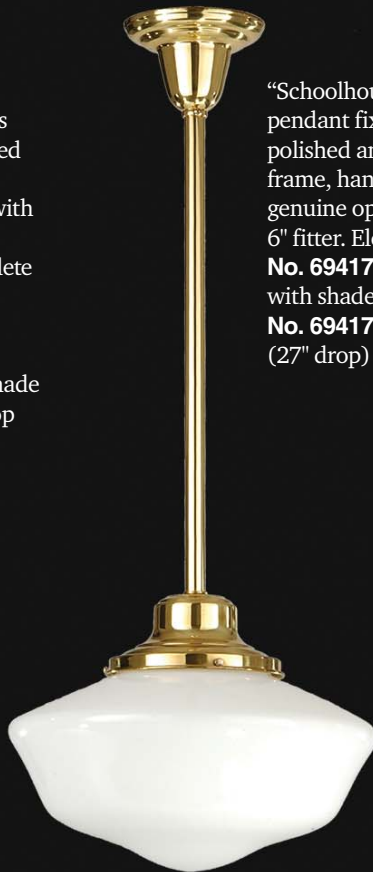
## Early Electric Pendant style Fixtures – Circa 1910-1930's

**A**merican inventor, Thomas A. Edison produced the first practical electric light bulb in 1879. And many Americans born in the early part of the 20th century can remember that the first electric fixture was simply an Edison light bulb screwed into a socket and hung from a wire from the ceiling. It was not until later that electric fixtures became decorative as well as functional. As early electric lighting evolved, fixtures and table lamps were designed to satisfy consumers' changing tastes in home decor.

Our fixtures reflect a few of the varying styles that were popular during the Period including the modernistic Art Deco and traditional Colonial Revival styles.



Art Deco style chain pendant fixture, brass polished and lacquered frame, hand blown genuine opal shade with 6" fitter. Elec.  
**No. 69140C** – Complete with shade has an adjustable drop from 25" to 58"  
**No. 69140\*** – Less shade has an adjustable drop from 15" to 48" \*



"Schoolhouse" style pendant fixture, brass polished and lacquered frame, hand blown genuine opal shade with 6" fitter. Electric.  
**No. 69417C** – Complete with shade, 35" drop  
**No. 69417\*** – Less shade (27" drop)



Colonial Revival style chain pendant fixture solid brass polished and lacquered frame, hand blown satin opal 4" fitter shade. Electric.  
**No. 60612C** – Complete with shade has an adjustable drop from 21<sup>3</sup>/<sub>4</sub>" to 27<sup>3</sup>/<sub>4</sub>" drop  
**No. 60615\*** – Less shade has an adjustable drop from 11<sup>3</sup>/<sub>4</sub>" to 17<sup>3</sup>/<sub>4</sub>".

\*For a selection of other glass lampshades and pendant shades, please see B & P Lamp Supply's "Lamp Glass" catalog, pages G-58 thru G-62

### Handsome and Functional Ceiling Dome Fixtures



**No. 69501C** – 10" fitter, 12" outside dia., 8" drop, has embossed Rosette classical design satin clear shade, solid brass hardware, and two long-life porcelain sockets.



**No. 69502C** – 10" fitter, 11<sup>3</sup>/<sub>4</sub>" outside dia., 7<sup>1</sup>/<sub>2</sub>" drop, has embossed Floral Swag design, satin opal glass shade, solid brass hardware, & two long-life porcelain sockets.



**No. 69500C** – 10" fitter, 11<sup>1</sup>/<sub>2</sub>" outside dia., 10" drop, has embossed Tulip design satin clear shade, solid brass hardware, and two long-life porcelain sockets.

## Electric Lamps of The 1920's & 1930's

**A** 1920's-30's Period Table Lamp with 18" diameter pleated hand-made pure silk shade, cast iron base and finial. The plant-like design was inspired by nature and reflects many lamps that were made in the Art Nouveau style. This design was originally made by the Bradley and Hubbard Mfg. Co., of Meridian, Ohio. Electrified.



**No. 69160C** – Complete with antique brass finish base, 9" harp, and champagne color-coordinated shade. 27" ht.  
**No. 69160** – Less shade\*



**No. 69161C** – Complete with antique copper finish base, 9" harp, and Rose Dust color-coordinated shade. 27" ht.  
**No. 69161** – Less shade\*

\*For a selection of other fabric lampshades, please see B & P Lamp Supply's "Lampshade And Finial" catalog, pages F-1 thru F-25.

**T**he Corinthian Column Lamp is a classical style table lamp with design elements taken from Greek and Roman architecture. Variations of the design were widely used in the late 19th century, when the lamps were fueled by kerosene. The Corinthian design was popular in both America and Europe, and remained in great demand well into the 20th century when manufacturers produced electric models.

Our Classic Corinthian Column Lamps have heavy, hand cast brass bases and fluted glass columns in your choice of Clear, Genuine Ruby, Cobalt Blue or Black glass colors. The complete electrified lamps are 30" tall and include a 7" harp and a 16" diameter Boulliotte fabric shade.



30" Corinthian column Table Lamp with Antique Brass finished hardware, fluted glass column and Dark Antique gold color 16" diameter hand-made Boulliotte fabric shade.

- No. 69030C** – Complete with Clear glass column
- No. 69032C** – Less shade
- No. 69030B** – Complete with Cobalt Blue glass column
- No. 69032B** – Less shade
- No. 69030N** – Complete with Black glass column
- No. 69032N** – Less shade
- No. 69030R** – Complete with Genuine Ruby glass column
- No. 69032R** – Less shade

## Electric Floor Lamps – Circa 1915-1940's

Floor Lamps were extremely popular in the first half of the 20th century. And many companies, including well-known names such as Tiffany, Handel, and Rembrandt provided their version of the floor lamp. The major types of floor lamps were Bridge Lamp, Torchiera Lamp and Reflector Lamp with Tiffany producing their famous Harp-type floor lamps. Lamps noted as Limited Edition will be limited to no more than 1000 pcs. and will not be produced again.



A.)

B.)

C.)

**A.) No. 69296C** – Tiffany Style Arts & Crafts Floor Lamp. An exceptional replica of a famous design. Our 54" tall floor lamp consists of a 12" Tiffany Acorn stained glass shade having geometric panels highlighted by a center panel of stylized Acorns and an adjustable shade holder harp. The column, showing bulbous plant like sections is connected to a base with 5 curved legs ending in leaf like pads. This lost wax cast bronze floor lamp is electrified with a pull chain socket and is finished in a dark bronze color. Electrified. Limited Edition

**B.)** Bridge Lamp with black finished cast iron base and "Ribbon" motif bridge arm, reeded brass column, onyx break and hand blown and painted "Roses" 2 1/4" fitter shade (#08497). 60" tall. Electrified.

**No. 69600B** – Complete with shade

**No. 69600** – Less shade

**C.)** Bridge Lamp w/black finished cast iron base & "Ribbon" motif bridge arm, reeded brass column, onyx break, & 12" dia. Champagne color, Silk Chiffon uno-fitter shade (#06762). 60" tall. Electrified.

**No. 69601B** – Complete with shade

**No. 69601** – Less shade

(Below)

**D.)** Torchiera Lamp with antique brass finish, onyx break, embossed 16" diameter glass "Leaves & Berries" decorated Torchiera shade (#09006) and porcelain 3 way mogul socket. 63" tall. Electrified

**No. 69606B** – Complete with shade

**No. 69606** – Less 2 3/4" fitter size Torchiera shade, 59" tall

**E.)** Floor Lamp with antique brass finish, onyx break, Antique Gold color, pure silk Jr. floor lamp shade (20" diameter #05840G), 3 way turn knob socket, harp and finial. 66 1/2" tall. Electrified

**No. 69609B** – Complete with shade

**No. 69609** – Less 20" diameter shade



D.)

E.)



## Deco Style Torchieres - Tiffany Hall Lantern

Beautiful "Lost Wax" Cast Bronze Lamps are perfect for the entry or hall of any fine home or upscale restaurant. Torchieres are complete with hand blown *Vianne* glass shades. The hall lantern has "lost wax" cast frame and canopy, and is completed with stained glass, hand leaded panels. Lost wax casting insures the highest level of detail and consistency in casting. It is a technique used by the masters to create some of the finest bronze castings and statuary of all time.



**No. 08821** – 4" fitter  
Vianne crystal glass  
"stalactite" shade



**No. 69220C** – Large and impressive hall lantern with "lost wax" cast frame and canopy, and hand made stained, leaded glass panels. 21" lantern with 56" overall drop .



**No. 08812** – 4" fitter  
Vianne crystal glass  
Art Deco shade

Art Deco style "lost wax" cast bronze "Egyptian Girl" Torchiere. 68" ht. with shade. Must ship truck.  
**No. 69620C** – Complete  
**No. 69620** – Less 4" fitter shade

Art Deco style "lost wax" cast bronze "Dancers" Torchiere. 78" ht. with shade. Must ship truck.  
**No. 69621C** – Complete  
**No. 69621** – Less 4" fitter shade

## Early Style, Stained Ruby Glass Lampshades



**No. 00656R** - 7" fitter Ruby Dot Optic Student shade with crimped top. 5 7/8" height, 8" diameter. Stained Glass.



**No. 00856R** - 8" dia. Ruby Dot Optic Ball shade with 4" fitter. 7 1/2" height. Stained Glass.



**No. 05075R** - 10" dia. Ruby Dot Optic Ball shade with 4" fitter. 9 1/2" height. Stained Glass.



**No. 06075R** - 10" fitter Ruby Dot Optic Student shade with crimped top. 7 1/4" height. Stained Glass.



**No. 08005R** - 14" dia. Ruby Dot Optic Dome shade with plain top. 6" top opening and 7" height. Stained Glass.



**No. 08475R** - 2 1/4" fitter Ruby Dot Optic fixture shade, crimped top, 4 1/2" height, 5" spread. Stained Glass.



**No. 08575R** - 4" fitter Ruby Dot Optic Gas shade, crimped top, 5" height, 7" spread. Stained Glass.



**No. 06175R** - 10" fitter Ruby Dot Optic Tam-O-Shanter shade with crimped top. 6 3/4" height, 11 1/2" diameter. Stained Glass.



## Early Style, Stained Cranberry Glass Lampshades



**No. 00656** - 7" fitter Cranberry Dot Optic Student shade with crimped top. 5 7/8" height, 8" dia.. Stained Glass.



**No. 00856** - 8" dia. Cranberry Dot Optic Ball shade with 4" fitter. 7 1/2" height. Stained Glass.



**No. 05075** - 10" dia. Cranberry Dot Optic Ball shade with 4" fitter. 9 1/2" height. Stained Glass.



**No. 06075** - 10" fitter Cranberry Dot Optic Student shade with crimped top. 7 1/4" height. Stained Glass.



**No. 08475** - 2 1/4" fitter Cranberry Dot Optic fixture shade, crimped top, 4 1/2" height, 5" spread. Stained Glass.



**No. 08005** - 14" dia. Cranberry Dot Optic Dome shade with plain top. 6" top opening and 7" height. Stained Glass.



**No. 01150** - 10" fitter Cranberry Hobnail Student shade with crimped top. 7 1/4" height. Stained Glass.

**No. 00450**- 7" fitter Cranberry Hobnail Student Shade. 5 5/8" height



**No. 08575** - 4" fitter Cranberry Dot Optic Gas shade, crimped top, 5" height, 7" spread. Stained Glass.



**No. 06175** - 10" fitter Cranberry Dot Optic Tam-O-Shanter shade with crimped top. 6 3/4" height, 11 1/2" diameter. Stained Glass.



## Early Style Lampshades



**No. 08401** - 2 1/4" fitter "Arts & Crafts" style shade, clear glass, sandblast inside finish. The pattern is based on an early 20th century Handel design. 4" diameter, 5 5/8" ht.



**No. 08401A** - 2 1/4" fitter "Arts & Crafts" style shade, Amber color glass with satin finish. The pattern is based on an early 20th century Handel design. 4" diameter, 5 5/8" ht.



Available 5/15/04

**No. 08635** - 2 1/4" fitter fixture shade, alternating clear and sand blast outside panels. Based on an early electric design circa 1920. Nice pattern for pan or shower fixtures. 3 5/8" diameter, 5 1/8" height.



**No. 08910** - 2 1/4" fitter, "Poppy", rib optic with peacock blue finish. 5" height, 5 1/2" diameter. Hand blown art glass shade. USA made.

**No. 08911** - 2 1/4" fitter, "Poppy", rib optic with gold iridescent finish, 5" height, 5 1/2" diameter. Hand blown art glass shade. USA made



Available 5/15/04

**No. 58010** - Clear "Coolidge Drape" pattern chimney, fits #2 and #3 burners, 3" fitter, 9" ht., 6 1/4" diameter.



Available 5/15/04

**No. 00676** - 6" Fitter Astral Solar style shade with original "Lyre" cut and polished design with a faceted neck is on crystal glass with a frosted background. 9 1/2" diameter, 9 3/4" ht. Wonderful replica of a mid 1800's Solar shade.



Available 5/15/04

**No. 00679** - 6" Fitter Astral Solar style shade with a flat rim top on crystal glass with a frosted background. The hand engraved shade with cut and polished "Grape Clusters with Vines" is based on an early 1800's design. 11" ht., 8 1/4" diameter.

# New! Electrical Parts & Components

Available Now!



**No. 48102-** Heavy duty 3-Way Mogul size porcelain socket for 3-Way bulbs. Commonly used on many reflector type floor lamps, this socket has a removable turn knob and comes with a 1/4F base. 250V 750W UL. Imported

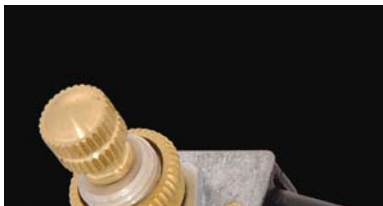


**No. 48100i-** High heat bakelite socket fixture with bottom turn knob switch. 250W-250V UL. 1 1/4" dia. body. Imported



**No. 48225i-** Standard base keyless candle socket. 2" height with 1/8 IP hickey & long insulator 250V 660W UL CSA. Imported

**No. 48208i-** Standard base, adjustable keyless candle socket. Ht. adjusts from 4" to 5 3/4" & comes w/a long paper insulator. 250V-660W UL CSA, Imported



**No. 40400i-** Rotary canopy switch with brass plated knob on 3/8" metal shank, and 6", 18 ga. wire leads. Rated at 3A-250-VAC, 6A-125 VAC, 6A125VL 1A 125V. UL CSA, Imported



Parts Available 5/7/04

**No. 40402i-** Two circuit rotary switch with brass knob on 3/8" metal shank, and 6", 18 ga. wire leads. Rated 6A-125 VAC., 3A-250 VAC, 3A 125 VL UL CSA, Imported



**No. 48213i-** Candelabra base keyless porcelain socket w/paper insulator. 2" height, 75W-125V, Imported, U.L listed



**No. 48319-** Adjustable keyless phenolic candelabra base candle socket with 1/8 IP hickey & paper insulator. Adjusts from 4 11/16" to 6" ht. 125V 75W UL CSA. Imported.



**No. 48318-** Adjustable keyless porcelain candelabra base candle socket with 1/8 IP hickey & paper insulator. Adjusts from 4 11/16" to 6" ht. 125V 75W UL CSA. Imported.



**No. 48317-** Adjustable keyless porcelain candelabra base candle socket with 1/8 IP hickey & paper insulator. Adjusts from 3 3/8" to 4 11/16" ht. 125V 75W UL CSA. Imported.



**No. 48705-** Socket adaptor, French to Candelabra base, 120V 75W. Imported



**No. 48316-** Candelabra base keyless porcelain socket 1/8 IP hickey & paper insulator. 1 9/16" overall height. 125V 75W UL CSA. Imported.



**No. 48706-** Socket adapter, Candelabra to standard base with paper insulator. 120V 75W. Imported



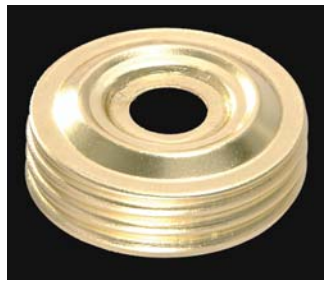
**No. 48704-** Socket adapter, porcelain, Standard base to Candelabra base. 250V 250W. Imported

# New! Oil Lamp Collars, Caps, Sockets



Add Your  
Socket Hdwe.

**No. 40314**- Brass plated, bridge arm swivel bracket socket cap adaptor. Designed to screw into any 1/8 F socket cap. If used on a floor lamp bridge arm, we recommend using B & P's complete socket #48240.



**No. 20790**- Large size threaded cap\*\* designed to fit Aladdin® Brand Electric table lamps. 1 11/16" O.D. X 5/8" ht., slip 1/8 IP center hole. Solid brass, unfinished. (Replacement for worn or cracked collars)



Available 7/15/04

**No. 20025**- Brass reducing collar. Screws into a #1 burner and reduces #1 size to fit a #00 Nutmeg and Acorn burner. Fits both antique and B&P's #1 and #00 threads. Solid brass.



**No. 20809**- Solid brass, unfinished, knurled Filler Cap with cork\*\* designed to fit ANTIQUE Aladdin® Brand glass kerosene table lamps which were made circa 1930-1950's.



**No. 20809A**- Solid Brass w/Antique brass finish, knurled Filler Cap with cork\*\* designed to fit ANTIQUE Aladdin® Brand glass kerosene table lamps which were made circa 1930-1950's.



**No. 20817N**- Solid Brass w/nickel finish. Knurled Filler Plug with rubber gasket\*\* designed to fit ANTIQUE Aladdin® Brand metal kerosene lamps & fonts which were made circa 1930-1950's.



**No. 20817**- Solid brass, unfinished. Knurled Filler Plug with rubber gasket\*\* designed to fit ANTIQUE Aladdin® Brand metal kerosene lamps & fonts which were made circa 1930-1950's.



Available 7/15/04

**No. 20026**- Brass adapting collar. Designed to be glued into the glass neck of kerosene "Sewing" lamps. Has female threads to fit antique and B&P #2 burners. (Replacement for worn or cracked collars.) Solid brass.



**No. 2 Brass Plated "Queen Anne" style electrified burner.** Beautiful styling and heavy duty construction make this a superior brass plated electrified burner. Fits most No. 2 size collars. Assembled with U.L. listed 8 ft. cord, 1 3/16" dia. threaded base, and accepts 3" dia. chimneys. Fits the following parts:

Chimneys: no. 57932, 57944, 57946, 57954, 57972, 57953, 57940, and all 3" base chimneys.

Tripods: no. 12713, 12719

Shade ring holders: no. 10722, 10734

Ball Shade Holders: no. 10780, 10790, 10790G, 10710

Collars: no. 20001, 20002, 20012, 20017, 20022

Your choice of cord color.

**No. 30180**- clear silver cord

**No. 30181**- brown cord

**No. 30182**- white cord

**No. 30183**- clear gold cord

**No. 30184**- black cord



Early Style, Solid Brass, Flat Key, Turn Key socket w/polished & lacquered finish, slotted setscrew.

**No. 48022** - Reg On-Off with Uno thread.

**No. 48023** - For 3-Way with Uno thread



**No.48022A** - Early Style, Solid Brass, Flat Key, 3-Way Turn Key socket with antique brass finish, slotted setscrew, with Uno thread

\*\*The products identified in this advertisement are manufactured by B&P Lamp Supply, Inc. and are not licensed, inspected, or warranted by Aladdin Industries, LLC. They should not be confused with Aladdin® brand products or parts manufactured by Aladdin Mantle Lamp Co. of Clarksville, Tennessee. Aladdin® is a registered trademark of Aladdin Industries LLC.



# New! Canopies & Canopy Kits

Available 5/7/04



Solid brass canopy kit with 5 1/4" dia. X 1 1/8" deep canopy, screw collar loop, 3' chain, crossbar, nipple, hickey, 2 nuts and 2 fixture screws. Nice general purpose style canopy.

- No. 11836** - Polished and lacquered
- No. 11836A** - Antique brass finish
- No. 11836N** - Nickel plated brass finish
- No. 11836U** - Unfinished

Available 5/7/04



Solid brass canopy with rosette design, 5 1/4" dia. X 1 1/8" deep with 1 1/16" center hole for screw collar loop. Nice general purpose design.

- No. 10806** - Polished and lacquered
- No. 10806A** - Antique brass finish
- No. 10806N** - Nickel plated brass finish
- No. 10806U** - Unfinished

Available 5/7/04



Solid brass canopy kit with 5 1/2" dia. X 1 1/2" deep canopy, screw collar loop, 3' chain, crossbar, nipple, hickey, 2 nuts and 2 fixture screws. Nice style for Crystal Chandeliers.

- No. 11833N** - Nickel plated brass finish
- No. 11833** - Polished and lacquered
- No. 11833U** - Unfinished

Available 5/7/04



Solid brass canopy, 5 1/2" dia. X 1 1/2" deep with 1 1/16" center hole for screw collar loop. Nice design for Crystal Chandeliers.

- No. 10803N** - Nickel plated brass finish
- No. 10803** - Polished and lacquered
- No. 10803U** - Unfinished



**No. 11801N** - Nickel plated, solid brass die cast canopy with loop, crossbar, and 1/8 IP pipe in center. 5 1/2" dia., X 1 1/2" deep.



Fine solid brass die cast canopy with loop, crossbar, and 1/8 IP pipe in center. 5 1/2" X 1 5/8" deep.

- No. 11800U** - Unfinished
- No. 11800** - Polished & Lacquered

# New! Brass & Nickel Plated Backplates



**No. 10802U-** Fancy solid brass die cast back plate, 9" X 3 7/8", center hole slips 1/8 IP. Unfinished.

**No. 10802-** Polished and lacquered



Large Colonial style solid die cast back plate, 14" X 4 1/2", center hole slips 1/8 IP.

**No. 10821U-** Unfinished

**No. 10821-** Polished & Lacquered



**No. 10812N-** Nickel plated, fine solid brass die cast back plate, 6" X 4 1/2" x 1" deep, center hole slips 1/8 IP.



**No. 10814N-** Nickel plated, ornate solid brass die cast back plate, 5 1/2" dia. X 1 1/2" deep, center hole slips 1/8 IP.



**No. 10829U-** Ornate solid brass die cast back plate, 5 1/2" X 3 5/8", center hole slips 1/8 IP. Unfinished.

**No. 10829-** Polished and lacquered



**No. 10814U-** Ornate solid brass die cast back plate, 5 1/2" dia., X 1 1/2" deep, center hole slips 1/8 IP. Unfinished.

**No. 10814-** Polished & lacquered



**No. 10820N -** Nickel plated solid brass stamped back plate, 6" X 4 1/2" X 1 1/4" deep, center hole slips 1/8 IP.



**No. 10823U-** Large solid brass die cast back plate, 6 7/8" X 4 7/8" X 1 1/8" deep, center hole slips 1/8 IP. Unfinished.

**No. 10823-** Polished and lacquered



(left) **No. 10815U-** Decorative solid brass die cast back plate, 5 1/2" dia. X 1 1/8" deep, center hole slips 1/8 IP. Unfinished.

**No. 10815-** Polished and lacquered



(right) **No. 10825U-** Decorative solid brass die cast back plate, 5 1/2" dia. X 1 5/8" deep, center hole slips 1/8 IP. Unfinished.

**No. 10825-** Polished and lacquered



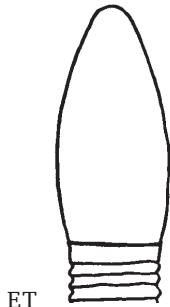
# NEW, LOWER PRICING ON TOP QUALITY LIGHT BULBS

Our New IMPORTED line of light bulbs are packed individually in white boxes labeled with B & P's Item No., color, bulb style, voltage, and wattage.

ASSORT ALL BULBS FOR LOWER PRICES!



CT  
Candelabra base,  
Torpedo Tip  
Decorative bulb,  
32 mm, 3000 hrs.  
Clear, 130V  
**No. 47000i-** 25W  
**No. 47001i-** 40W  
**No. 47002i-** 60W



ET  
Standard base,  
Torpedo Tip  
Decorative bulb,  
32 mm, 3000  
hrs. Clear, 130V  
**No.47023i-** 25W  
**No.47024i-** 40W  
**No.47025i-** 60W  
**No.47026i-** 60W Frost



CF  
Candelabra base,  
Flame Tip  
Decorative bulb,  
3000 hrs. Clear,  
130V  
**No.47010i-** 15W  
**No.47011i-** 25W  
**No.47012i-** 40W



EF  
Standard base,  
Flame Tip  
Decorative bulb,  
3000 hrs. Clear,  
130V  
**No.47017i-** 25W  
**No.47018i-** 40W



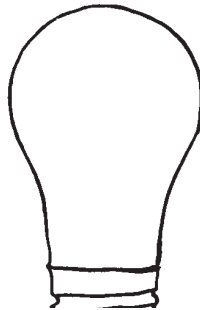
**No. 47006i -**  
Candelabra  
base, Flame  
Tip, Silicone  
Decorative  
Bulb, 6W  
Clear, 130V.  
Bulb ht. 1 1/2",  
Overall ht. 4 1/4"



CA-5-15mm  
**No. 47007i -**  
Candelabra  
base, Flicker  
Flame bulbs  
with 3" silicone  
tip. 3W, E12,  
3000 hr. Clear,  
130V Bulb ht.  
2 3/4", Overall ht.  
4 1/2"



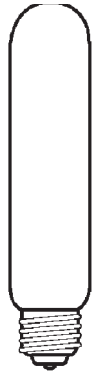
C7  
**No. 47008i-** Night  
Lite bulbs w/3"  
silicone tip. 130V,  
7.5W, E12, 3000 hr.  
Clear. Bulb ht.  
2 1/8", Overall ht. 5"



A-15  
Standard base, all  
purpose fan light &  
appliance bulb.  
Recommended in down  
lights & enclosed shade  
applications. 3000 hrs.  
Clear, 130V  
**No.47030i-** 40W



Petite CT  
Candelabra base,  
Torpedo Tip, Petite  
Decorative bulb,  
25 mm, 3000 hrs.  
Clear, 130V  
**No. 47021i-** 25W  
**No. 47022i-** 40W



T-10  
Standard base,  
Tubular, Display  
or Appliance  
bulb, 2500 hrs.  
Clear, 130V  
**No.47014i-** 25W  
**No.47015i-** 40W

FLICKER  
FLAME  
decorative  
bulbs, rated  
2-3 watts.  
1,500 hrs.



**No. 47072i -** Candelabra  
base, Flame Twist,  
Clear, CA-5 - 15 mm  
bulb, 3 watt, 130V  
**No. 47070i-** Candelabra  
base, Flame Tip, Clear,  
CA-8 - 32 mm bulb, 3  
watt, 120V  
**No. 47071i -** Standard  
base, Flame Tip, Clear,  
CA-10 - 32 mm bulb, 3  
watt, 120V



CST-6  
**No.47003i -** Candelabra  
base,  
"Puntino"  
Spiry Tip Clear  
dec. bulb, 15  
watt, 1500  
hrs. 130V



CA-5  
**No. 47004i**  
-  
Candelabra  
base, Clear  
Flame Twist  
dec. bulb,  
7 1/2 watt,  
3000 hrs.  
130V



C-7  
**No. 47005i -**  
Candelabra  
base, Clear  
Night Lite  
bulb, 7 1/2W,  
3,000 hrs.  
130V



**No. 47101 -**  
Standard base,  
small silicone  
tipped bulb, 4 1/2"  
ht., 7 1/2W, 3,000  
hrs. 130V. Your  
choice of color!



**No. 47102-**  
Champagne tip  
**No. 47103-** Clear  
tip



# Candle Covers - Resin, Arts & Crafts Print and Fiber Drip Designs

Our Poly-Resin candle covers have the look of real wax covers, but are much more durable. Not only are these resin covers heat resistant and washable, they will maintain their color and shape indefinitely. In addition each cover is hand made and has its own unique, hand-applied drip pattern. We also offer special size check rings to accommodate the base of these covers.



"Fiber Drip" paper candle covers with realistically painted light tan & gold tinted finish.  
Edison (standard) base, 1 1/4" I.D., 1 5/16" outside diameter  
**No. 19934** - 4" tall  
**No. 19932** - 6" tall  
Candelabra base, 3/4" I.D., 7/8" outside diameter  
**No. 19935** - 4" tall  
**No. 19933** - 6" tall



"Arts & Crafts" print fiber (paper) candle covers with light gold background color. The design was taken from an original early 20th century cover.  
**No. 19980** - standard base, 4" ht., X 1 1/4" I.D., 1 5/16" outside dia.  
**No. 19981** - candelabra base, 4" ht., X 3/4" I.D. 7/8" outside dia.

Available 5/10/04



Extra Thick - Antique Gold color resin candle covers with melting candle design effect. (Top of cover extends about 5/8" beyond top of interior socket.)  
Candelabra base, 7/8" I.D. X 1 3/4" O.D.  
**No. 19990A** - for 4" tall socket interiors  
**No. 19991A** - for 6" tall socket interiors  
Edison (standard) base, 1 1/4" I.D. X 2" O.D.  
**No. 19992A** - for 4" tall socket interiors  
**No. 19993A** - for 6" tall socket interiors

Available 5/10/04



Extra Thick - Gold color resin candle covers with melting candle design effect. (Top of cover extends about 5/8" beyond top of interior socket.)  
Candelabra base, 7/8" I.D. X 1 3/4" O.D.  
**No. 19990G** - for 4" tall socket interiors  
**No. 19991G** - for 6" tall socket interiors  
Edison (standard) base, 1 1/4" I.D. X 2" O.D.  
**No. 19992G** - for 4" tall socket interiors  
**No. 19993G** - for 6" tall socket interiors

Available 5/10/04



Extra Thick - Satin White color resin candle covers with melting candle design effect. (Top of cover extends about 5/8" beyond the top of interior socket.)  
Candelabra base, 7/8" I.D. X 1 3/4" O.D.  
**No. 19990W** - for 4" tall socket interiors  
**No. 19991W** - for 6" tall socket interiors  
Edison (standard) base, 1 1/4" I.D. X 2" O.D.  
**No. 19992W** - for 4" tall socket interiors  
**No. 19993W** - for 6" tall socket interiors

Available 5/10/04



Gold color resin candle cover with applied drips.  
Candelabra base, 7/8" I.D. X 1 1/4" O.D.  
**No. 19995G** - 4" tall  
**No. 19996G** - 6" tall  
Edison (standard) base, 1 1/4" I.D. X 1 3/4" O.D.  
**No. 19997G** - 4" tall  
**No. 19998G** - 6" tall

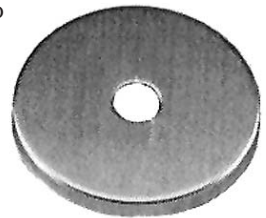
Available 5/10/04



Ivory color resin candle cover with applied drips.  
Candelabra base, 7/8" I.D. X 1 1/4" O.D.  
**No. 19995i** - 4" tall  
**No. 19996i** - 6" tall  
Edison (standard) base, 1 1/4" I.D. X 1 3/4" O.D.  
**No. 19997i** - 4" tall  
**No. 19998i** - 6" tall

Large Seating Ring designed to fit Poly Resin Candle Covers. Stamped steel, curved edge, slip 1/8 IP, brass plated and lacquered finish.

**No. 22505** - 1 1/4" dia.  
**No. 22508** - 1 3/4" dia.  
**No. 22509** - 2" dia.



## Table of Contents

Astral Lamps . . . . .	R-22	Lampshades (cont.)	
Candlesticks / Lamps . . .	R-19 - R-21	Reverse Painted . . . . .	R-17 - R-18
Floor Lamps . . . . .	R-61 - R-62	Ruby (Stained) . . . . .	R-63
Hall Lanterns (Bell Type) . .	R-4 - R-10	Tiffany Style (Stained Glass) . .	R-16
Hanging Lamps		Lp. Hdwe . . . . .	R-18, R-27, R-66 - R-69
Cast Iron . . . . .	R-23, R-24	Light Bulbs . . . . .	R-70
Gas & Gas/Electric Comb. . .	R-58	Miniature Lamps . . . . .	R-31 - R-34
Library Lamps . . . . .	R-51 - R-56	Oil Lamps . . . . .	R-25 - R-28
Mammoth (Big Store) . . . . .	R-23	Sconces . . . . .	R-57
Mission (Arts & Crafts) . . . .	R-58	Table Lamps	
Pendant Fixtures . . . . .	R-58 - R-59	Banquet Lamps . . . . .	R-43 - R-50
Lampshades		Early Electric Style . . . . .	R-11 - R-15
Astral . . . . .	R-22, R-65	G-W-T-Wind Lamps . . . . .	R-36 - R-43
Ball Shades . . . . .	R-46-R-47, R-63-R-64	Oil to Electric Lamps . . . . .	R-27 - R-30
Cranberry (Stained) . . . . .	R-64	Student & Stand Lps . . . . .	R-35
Dome Shades (14") . . . . .	R-53 - R-54	Wall Bracket Lamps . . . . .	R-24